

Stainless Steel Heavy Duty Free-Standing Enclosures For Flange-Mounted Disconnects

Application -

Designed to house electrical equipment and provide degree of protection from dirt, dust, oil and water and to house most standard type disconnects. For installation information, consult our Installation Manual at www.saginawcontrol.com.

Construction -

- 0.104" stainless steel Type 304.
- Seams continuously welded and ground smooth.
- Flange trough collar around all sides of door opening.
- Body stiffeners in large enclosures for extra rigidity.
- Heavy duty lifting eyes anchor into reinforced top.
- Stainless steel concealed hinges.
- Black zinc die cast coinproof/padlocking handle.
- 3-point latching mechanism.
- Black quarter turn latches as required.
- Panel supports.
- Large removable print pockets.
- Oil-resistant gasket.
- Removable sub-panels mount on collar studs.
- Defeater on master door requires a screwdriver to open.
- Ground stud on door and body.
- Provisions for light kit.

Disconnect switch (or circuit breaker) and operating mechanism are not furnished with enclosure.

Finish -

#4 brushed finish on all exterior surfaces. Sub-panels powder coated white.

IS6 - Industry Standards -

NEMA Type 3R, 4, 4X, 12 & Type 13
UL Listed Type 3R, 4, 4X & 12
CSA Type 3R, 4, 4X & 12
IEC 60529 IP66

***Special Instructions apply for IS3, IS4 and IS6 to maintain the environmental rating of Type 3R for these parts. See the Special Instructions on the Industry Standards page in the Technical Information Section.

STAINLESS STEEL HEAVY DUTY FREE-STANDING ENCLOSURES FOR FLANGE-MOUNTED DISCONNECTS SINGLE-DOOR ENCLOSURES

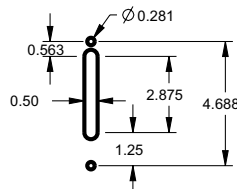
ENCLOSURE PRODUCT CODE S2						SUB-PANEL (P3)			
Catalog No.	Height (A)	Width (B)	Depth (C)	Industry Standard	List Price	Catalog No.	Panel Height (E)	Panel Width (F)	List Price
SCE-72XM2818SS	72.00	27.50	18.00	IS6	5,635.10	SCE-64P25**	60.00	21.75	Int 5,905.00
SCE-72XM3418SS	72.00	33.50	18.00	IS6	6,245.44	SCE-64P31**	60.00	27.75	Int 6,714.00
SCE-72XM4018SS	72.00	39.50	18.00	IS6	6,855.82	SCE-64P37**	60.00	33.75	Int 7,210.00
SCE-84XM4018SS	84.00	39.50	18.00	IS6	7,620.90	SCE-76P37**	72.00	33.75	Int 7,900.00
SCE-84XM4024SS	84.00	39.50	24.00	IS6	7,835.81	SCE-76P37**	72.00	33.75	Int 7,900.00
SCE-90XM4018SS	90.00	39.50	18.00	IS6	8,162.50	SCE-82P37**	78.00	33.75	Int 8,450.00
SCE-90XM4020SS	90.00	39.50	20.00	IS6	8,450.48	SCE-82P37**	78.00	33.75	Int 8,450.00
SCE-90XM4024SS	90.00	39.50	24.00	IS6	8,738.46	SCE-82P37**	78.00	33.75	Int 8,450.00

XM ENCLOSURES

* Add the letter U to the end of the part number for enclosures with a universal disconnect cutout.

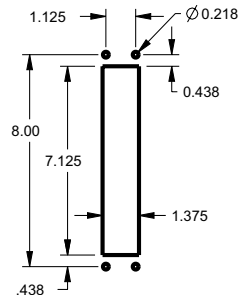
Standard Disconnect cutout provided

D 1



Universal Disconnect cutout

D 7



**Sub-panel included with enclosure.
Replacement panels can be ordered.
Prices found in the accessory section.

Phone (989) 799-6871
Fax (989) 799-4524



STAINLESS STEEL HEAVY DUTY FREE-STANDING ENCLOSURES FOR FLANGE-MOUNTED DISCONNECTS

TWO-DOOR ENCLOSURES

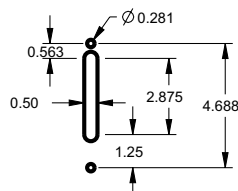
ENCLOSURE PRODUCT CODE S2						SUB-PANEL (P3)			
Catalog No.	Height (A)	Width (B)	Depth (C)	Industry Standard	List Price	Catalog No.	Panel Height (E)	Panel Width (F)	List Price
SCE-72XM5418SS	72.00	53.75	18.00	IS6	9,890.44	SCE-64P52**	60.00	48.00	1,344.21
SCE-72XM6618SS	72.00	65.75	18.00	IS6	11,145.52	SCE-64P64**	60.00	60.00	1,621.00
SCE-72XM7818SS	72.00	77.75	18.00	IS6	12,396.34	SCE-64P76**	60.00	72.00	1,951.80
SCE-72XM7824SS	72.00	77.75	24.00	IS6	13,286.12	SCE-64P76**	60.00	72.00	1,951.80
SCE-84XM7818SS	84.00	77.75	18.00	IS6	13,758.93	SCE-76P76**	72.00	72.00	1,987.68
SCE-84XM7824SS	84.00	77.75	24.00	IS6	13,930.86	SCE-76P76**	72.00	72.00	1,987.68
SCE-90XM7818SS	90.00	77.75	18.00	IS6	14,691.64	SCE-82P76**	78.00	72.00	1,901.82
SCE-90XM7824SS	90.00	77.75	24.00	IS6	15,418.09	SCE-82P76**	78.00	72.00	1,901.82

XM ENCLOSURES

* Add the letter U to the end of the part number for enclosures with a universal disconnect cutout.

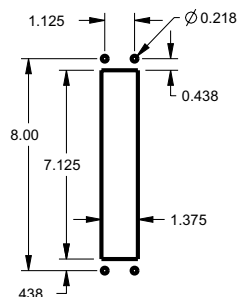
Standard Disconnect cutout provided

D 1



Universal Disconnect cutout

D 7



**Sub-panel included with enclosure.
Replacement panels can be ordered.
Prices found in the accessory section.



Stainless Steel Heavy Duty Free-Standing Enclosures For Flange-Mounted Disconnects

Application -

Designed to house electrical equipment and provide degree of protection from dirt, dust, oil and water and to house most standard type disconnects. For installation information, consult our Installation Manual at www.saginawcontrol.com.

Construction -

- 0.104" stainless steel Type 304.
- Seams continuously welded and ground smooth.
- Flange trough collar around all sides of door opening.
- Body stiffeners in large enclosures for extra rigidity.
- Heavy duty lifting eyes anchor into reinforced top.
- Removable center posts permit easy sub-panel installation.
- Stainless steel concealed hinges.
- Black zinc die cast coinproof/padlocking handle on main door with black zinc die cast padlocking handle on slave doors.
- 3-point latching mechanism.
- Black quarter turn latches as required.
- Panel supports.
- Large removable print pockets.
- Oil-resistant gasket.
- Removable sub-panels mount on collar studs.
- Master door is far right-hand door on all enclosures.
- Defeater on master door requires a screwdriver to open.
- Mechanical interlock activated by master door prevents slave doors from being opened first. Doors can be closed in any order.
- Ground stud on door and body.
- Provisions for light kit.

Disconnect switch (or circuit breaker) and operating mechanism are not furnished with enclosure.

Finish -

#4 brushed finish on all exterior surfaces. Sub-panels powder coated white.

IS6 - Industry Standards -

NEMA Type 3R, 4, 4X, 12 & Type 13
UL Listed Type 3R, 4, 4X & 12
CSA Type 3R, 4, 4X & 12
IEC 60529 IP66

***Special Instructions apply for IS3, IS4 and IS6 to maintain the environmental rating of Type 3R for these parts. See the Special Instructions on the Industry Standards page in the Technical Information Section.

Stainless Steel Heavy Duty Free-Standing Enclosures For Flange-Mounted Disconnects

Application -

Designed to house electrical equipment and provide degree of protection from dirt, dust, oil and water and to house most standard type disconnects. For installation information, consult our Installation Manual at www.saginawcontrol.com.

Construction -

- 0.104" stainless steel Type 304.
- Seams continuously welded and ground smooth.
- Flange trough collar around all sides of door opening.
- Body stiffeners in large enclosures for extra rigidity.
- Heavy duty lifting eyes anchor into reinforced top.
- Removable center posts permit easy sub-panel installation.
- Stainless steel concealed hinges.
- Black zinc die cast coinproof/padlocking handle on main door with black zinc die cast padlocking handle on slave doors.
- 3-point latching mechanism.
- Black quarter turn latches as required.
- Panel supports.
- Large removable print pockets.
- Oil-resistant gasket.
- Removable sub-panels mount on collar studs.
- Master door is far right-hand door on all enclosures.
- Defeater on master door requires a screwdriver to open.
- Mechanical interlock activated by master door prevents slave doors from being opened first. Doors can be closed in any order.
- Ground stud on door and body.
- Provisions for light kit.

Disconnect switch (or circuit breaker) and operating mechanism are not furnished with enclosure.

Finish -

#4 brushed finish on all exterior surfaces. Sub-panels powder coated white.

IS6 - Industry Standards -

NEMA Type 3R, 4, 4X, 12 & Type 13
UL Listed Type 3R, 4, 4X & 12
CSA Type 3R, 4, 4X & 12
IEC 60529 IP66

***Special Instructions apply for IS3, IS4 and IS6 to maintain the environmental rating of Type 3R for these parts. See the Special Instructions on the Industry Standards page in the Technical Information Section.

STAINLESS STEEL HEAVY DUTY FREE-STANDING ENCLOSURES FOR FLANGE-MOUNTED DISCONNECTS THREE-DOOR ENCLOSURES

ENCLOSURE PRODUCT CODE S2						SUB-PANEL (P3)			
Catalog No.	Height (A)	Width (B)	Depth (C)	Industry Standard	List Price	Catalog No.	Panel Height (E)	Panel Width (F)	List Price
SCE-72XM3EQ18SS	72.00	99.50	18.00	IS6	14,816.33	SCE-64P31** & SCE-64P64**	60.00	27.75	Int 10,714.11
SCE-72XM3EW18SS	72.00	117.50	18.00	IS6	16,677.48	SCE-64P37** & SCE-64P76**	60.00	33.75	Int 12,210.00
SCE-84XM3EW18SS	84.00	117.50	18.00	IS6	18,594.54	SCE-76P37** & SCE-76P76**	72.00	33.75	Int 25,010.00
SCE-84XM3EW24SS	84.00	117.50	24.00	IS6	18,813.76	SCE-76P37** & SCE-76P76**	72.00	33.75	Int 25,010.00
SCE-90XM3EW24SS	90.00	117.50	24.00	IS6	20,748.01	SCE-82P37** & SCE-82P76**	78.00	33.75	Int 27,815.41

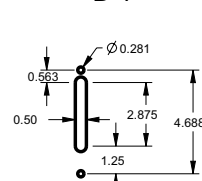
****Sub-panel included with enclosure. Replacement panels can be ordered. Prices found in the accessory section.**

XM ENCLOSURES

* Add the letter U to the end of the part number for enclosures with a universal disconnect cutout.

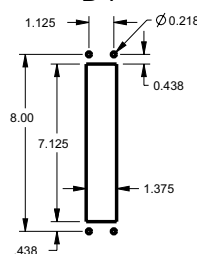
Standard Disconnect cutout provided

D 1



Universal Disconnect cutout

D 7



Phone (989) 799-6871
Fax (989) 799-4524



STAINLESS STEEL HEAVY DUTY FREE-STANDING ENCLOSURES FOR FLANGE-MOUNTED DISCONNECTS

FOUR-DOOR ENCLOSURES

ENCLOSURE PRODUCT CODE S2						SUB-PANEL (P3)			
Catalog No.	Height (A)	Width (B)	Depth (C)	Industry Standard	List Price	Catalog No.	Panel Height (E)	Panel Width (F)	List Price
SCE-84XM4EW18SS	84.00	157.50	18.00	IS6	25,852.40	SCE-76P76** (2)	72.00	72.00	In 498.78
SCE-84XM4EW24SS	84.00	157.50	24.00	IS6	27,014.22	SCE-76P76** (2)	72.00	72.00	In 498.78
SCE-90XM4EW18SS	90.00	157.50	18.00	IS6	26,944.43	SCE-82P76** (2)	78.00	72.00	In 501.02
SCE-90XM4EW24SS	90.00	157.50	24.00	IS6	27,982.42	SCE-82P76** (2)	78.00	72.00	In 501.02

FIVE-DOOR ENCLOSURES

ENCLOSURE PRODUCT CODE S2						SUB-PANEL (P3)			
Catalog No.	Height (A)	Width (B)	Depth (C)	Industry Standard	List Price	Catalog No.	Panel Height (E)	Panel Width (F)	List Price
SCE-84XM5EW18SS	84.00	196.75	18.00	IS6	32,254.81	SCE-76P37** (2)	72.00	33.75	In 250.65
						SCE-76P76** &	72.00	72.00	In 498.78
SCE-84XM5EW24SS	84.00	196.75	24.00	IS6	33,634.14	SCE-76P37** (2)	72.00	33.75	In 250.65
						SCE-76P76** &	72.00	72.00	In 498.78
SCE-90XM5EW18SS	90.00	196.75	18.00	IS6	33,542.74	SCE-82P37** (2)	78.00	33.75	In 278.51
						SCE-82P76** &	78.00	72.00	In 501.02
SCE-90XM5EW24SS	90.00	196.75	24.00	IS6	34,842.54	SCE-82P37** (2)	78.00	33.75	In 278.51
						SCE-82P76** &	78.00	72.00	In 501.02

SIX-DOOR ENCLOSURES

ENCLOSURE PRODUCT CODE S2						SUB-PANEL (P3)			
Catalog No.	Height (A)	Width (B)	Depth (C)	Industry Standard	List Price	Catalog No.	Panel Height (E)	Panel Width (F)	List Price
SCE-84XM6EW24SS	84.00	235.00	24.00	IS6	40,104.23	SCE-76P76** (3)	72.00	72.00	In 498.78
SCE-90XM6EW24SS	90.00	235.00	24.00	IS6	41,652.77	SCE-82P76** (3)	78.00	72.00	In 501.02



Stainless Steel Heavy Duty Free-Standing Enclosures For Flange-Mounted Disconnects

Application -

Designed to house electrical equipment and provide degree of protection from dirt, dust, oil and water and to house most standard type disconnects. For installation information, consult our Installation Manual at www.saginawcontrol.com.

Construction -

- 0.104" stainless steel Type 304.
- Seams continuously welded and ground smooth.
- Flange trough collar around all sides of door opening.
- Body stiffeners in large enclosures for extra rigidity.
- Heavy duty lifting eyes anchor into reinforced top.
- Removable center posts permit easy sub-panel installation.
- Stainless steel concealed hinges.
- Black zinc die cast coinproof/padlocking handle on main door with black zinc die cast padlocking handle on slave doors.
- 3-point latching mechanism.
- Black quarter turn latches as required.
- Panel supports.
- Large removable print pockets.
- Oil-resistant gasket.
- Removable sub-panels mount on collar studs.
- Master door is far right-hand door on all enclosures.
- Defeater on master door requires a screwdriver to open.
- Mechanical interlock activated by master door prevents slave doors from being opened first. Doors can be closed in any order.
- Ground stud on door and body.
- Provisions for light kit.

Disconnect switch (or circuit breaker) and operating mechanism are not furnished with enclosure.

Finish -

#4 brushed finish on all exterior surfaces. Sub-panels powder coated white.

IS6 - Industry Standards -

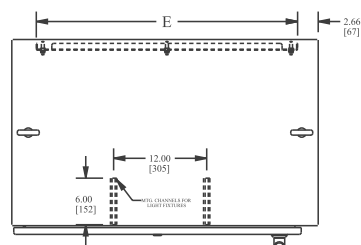
NEMA Type 3R, 4, 4X, 12 & Type 13
UL Listed Type 3R, 4, 4X & 12
CSA Type 3R, 4, 4X & 12
IEC 60529 IP66

***Special Instructions apply for IS3, IS4 and IS6 to maintain the environmental rating of Type 3R for these parts. See the Special Instructions on the Industry Standards page in the Technical Information Section.

STAINLESS STEEL HEAVY DUTY FREE-STANDING ENCLOSURES FOR FLANGE-MOUNTED DISCONNECTS

TECHNICAL DATA

SINGLE-DOOR ENCLOSURE

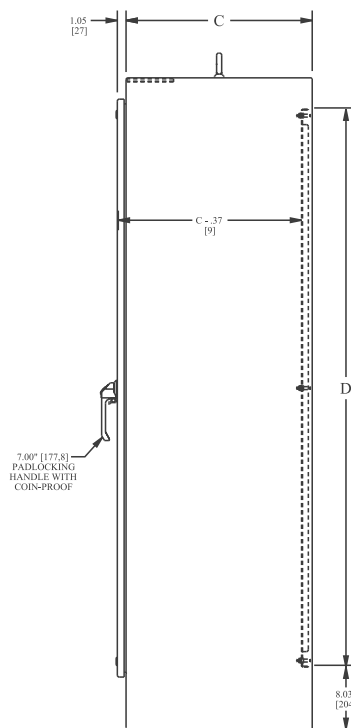
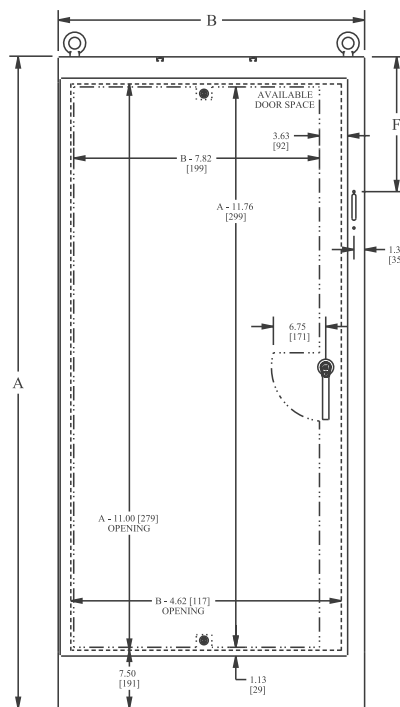


STANDARD DISCONNECTS:

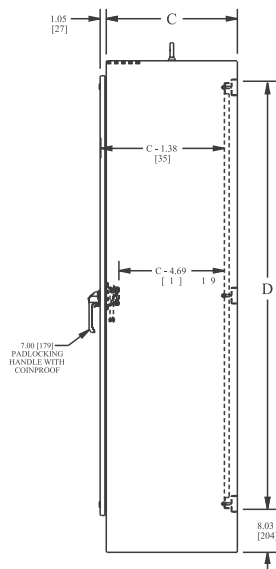
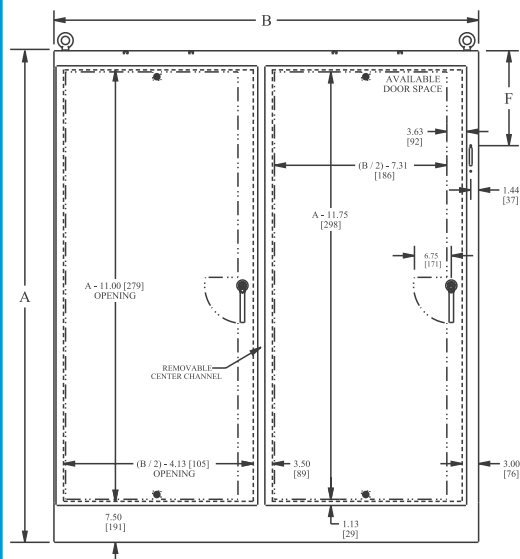
F = 11.88 [301,7] when A = 72.00 [1828,8]
F = 17.38 [441,4] when A = 84.00 [2133,6]
F = 20.38 [517,6] when A = 90.00 [228,6]

LATCH NOTES:

Omit center latch top and bottom of door when door width is < 30.00 [762]



TWO-DOOR ENCLOSURE

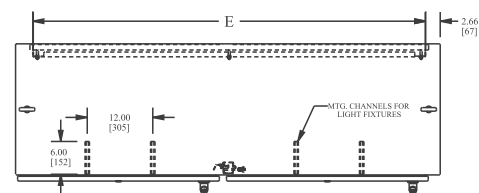


STANDARD DISCONNECTS:

F = 11.88 [301,7] when A = 72.00 [1828,8]
F = 17.38 [441,4] when A = 84.00 [2133,6]
F = 20.38 [517,6] when A = 90.00 [228,6]

LATCH NOTES:

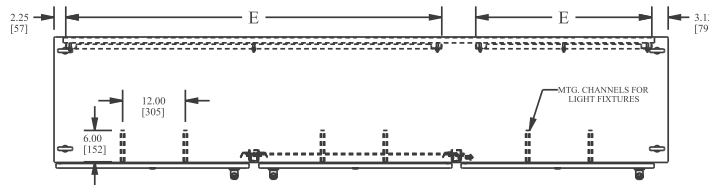
Omit center latch top and bottom of door when door width is < 30.00 [762]



STAINLESS STEEL HEAVY DUTY FREE-STANDING ENCLOSURES FOR FLANGE-MOUNTED DISCONNECTS

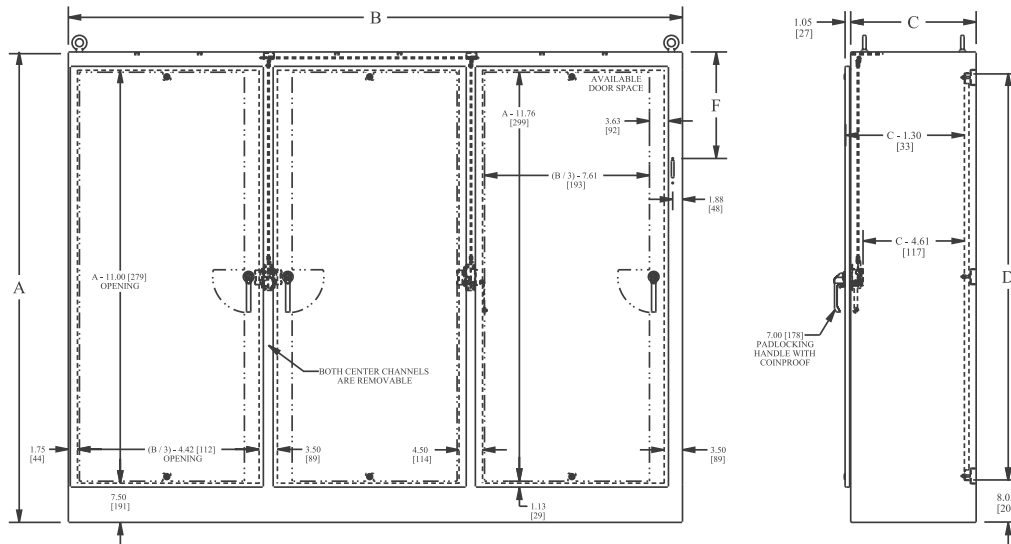
TECHNICAL DATA

THREE-DOOR ENCLOSURE

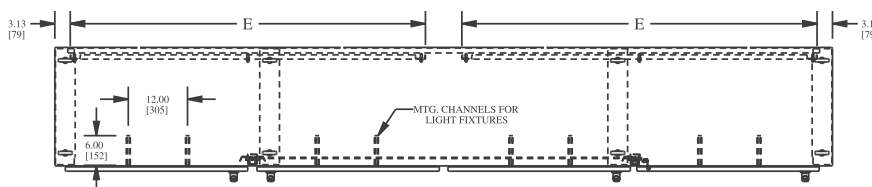


STANDARD DISCONNECTS:
 $F = 11.88$ [301,7] when $A = 72.00$ [1828,8]
 $F = 17.38$ [441,4] when $A = 84.00$ [2133,6]
 $F = 20.38$ [517,6] when $A = 90.00$ [228,6]

LATCH NOTES:
 Omit center latch top and bottom of door
 when door width is < 30.00 [762]

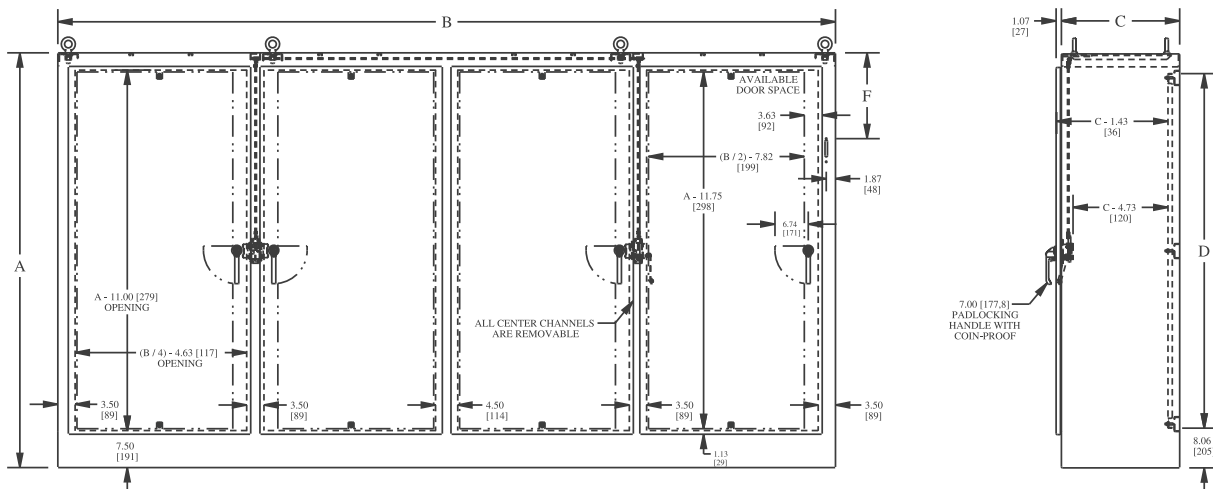


FOUR-DOOR ENCLOSURE



STANDARD DISCONNECTS:
 $F = 11.88$ [301,7] when $A = 72.00$ [1828,8]
 $F = 17.38$ [441,4] when $A = 84.00$ [2133,6]
 $F = 20.38$ [517,6] when $A = 90.00$ [228,6]

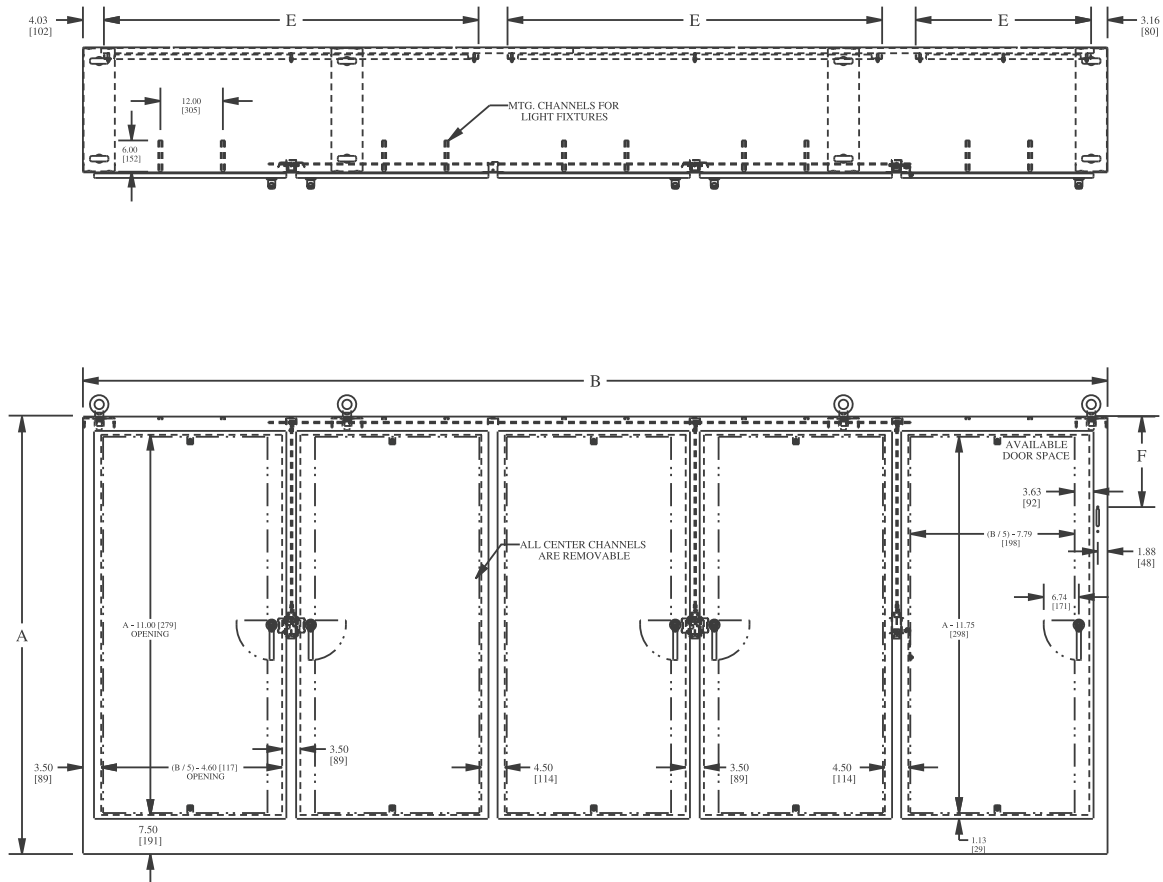
LATCH NOTES:
 Omit center latch top and bottom of door
 when door width is < 30.00 [762]



STAINLESS STEEL HEAVY DUTY FREE-STANDING ENCLOSURES FOR FLANGE-MOUNTED DISCONNECTS

TECHNICAL DATA

FIVE-DOOR ENCLOSURE



STANDARD DISCONNECTS:

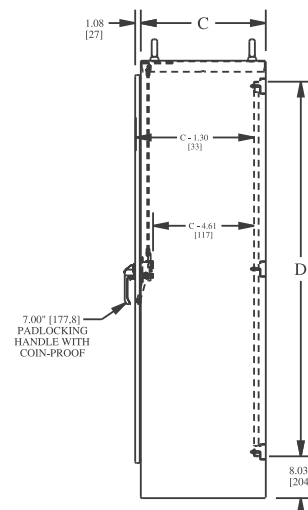
$F = 11.88$ [301,7] when $A = 72.00$ [1828,8]

$F = 17.38$ [441,4] when $A = 84.00$ [2133,6]

$F = 20.38$ [517,6] when $A = 90.00$ [228,6]

LATCH NOTES:

Omit center latch top and bottom of door
when door width is < 30.00 [762]

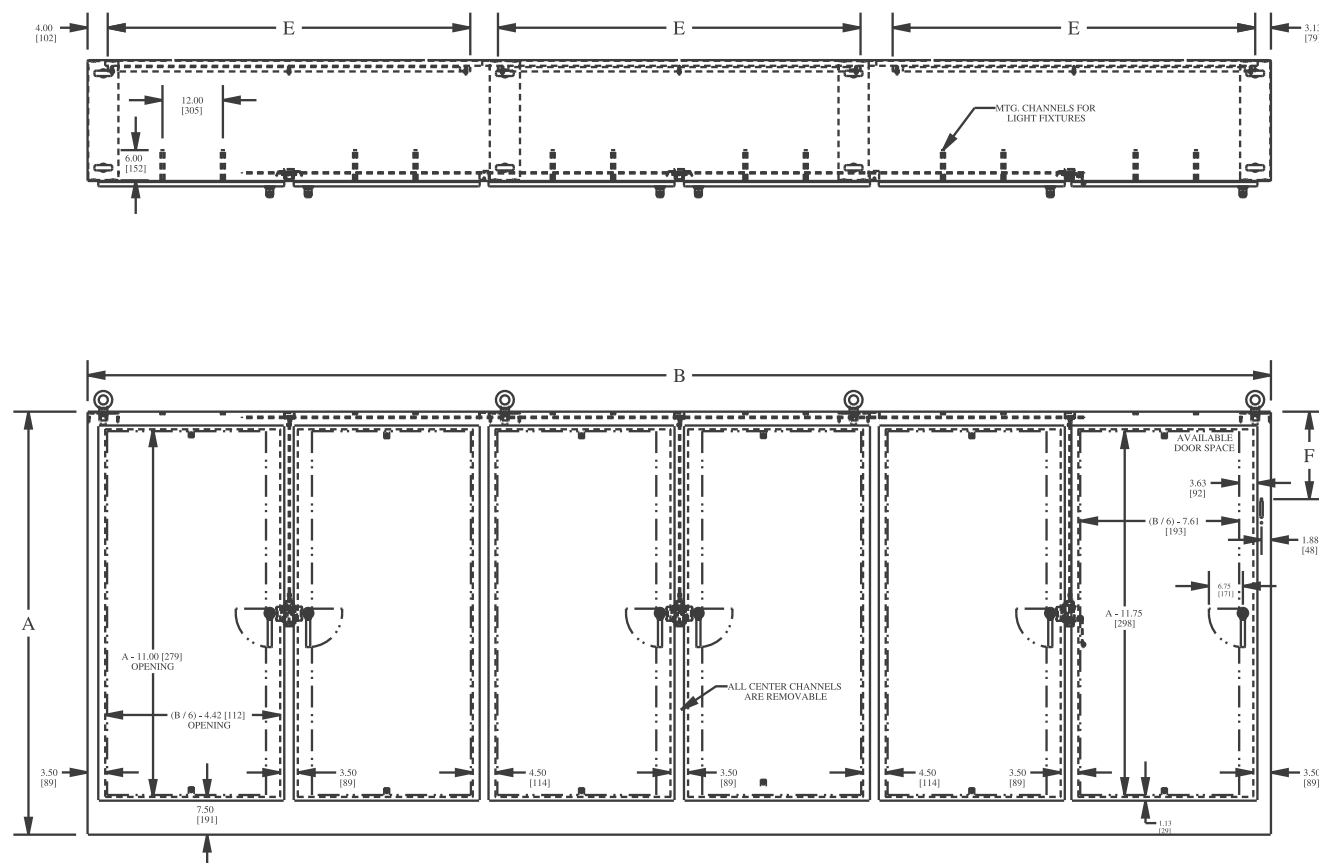


Phone (989) 799-6871

Fax (989) 799-4524

STAINLESS STEEL HEAVY DUTY FREE-STANDING ENCLOSURES FOR FLANGE-MOUNTED DISCONNECTS

SIX-DOOR ENCLOSURE



STANDARD DISCONNECTS:
 $F = 11.88$ [301,7] when $A = 72.00$ [1828,8]
 $F = 17.38$ [441,4] when $A = 84.00$ [2133,6]
 $F = 20.38$ [517,6] when $A = 90.00$ [228,6]

LATCH NOTES:
Omit center latch top and bottom of door
when door width is < 30.00 [762]

