

## Heavy Duty Free-Standing Enclosures For Flange-Mounted Disconnects

### Application -

Designed to house electrical equipment and provide degree of protection from dirt, dust, oil and water and to house most standard type disconnects. For installation information, consult our Installation Manual at [www.saginawcontrol.com](http://www.saginawcontrol.com).

### Construction -

- 0.125" carbon steel.
- Seams continuously welded and ground smooth.
- Flange trough collar around all sides of door opening.
- Body stiffeners in large enclosures for extra rigidity.
- Heavy duty lifting eyes anchor into reinforced top.
- Removable center posts permit easy sub-panel installation.
- Concealed hinges.
- Black zinc die cast coinproof/padlocking handle on main door with black zinc die cast padlocking handle on slave doors.
- 3-point latching mechanism.
- Ends of latch rods have ramp shoes for easier door closing.
- Panel supports.
- Large removable print pockets.
- Oil-resistant gasket.
- Removable panels mount on collar studs.
- Master door is far right-hand door on all enclosures.
- Defeater on master door requires a screwdriver to open.
- Mechanical interlock activated by master door prevents slave doors from being opened first. Doors can be closed in any order.
- Hole plugs provided to seal holes in bottom of enclosure.
- Ground stud on door and body.
- Provisions for light kit.

**Disconnect switch (or circuit breaker) and operating mechanism are not furnished with enclosure.**

### Finish -

ANSI-61 gray powder coated inside and out. Sub-panels powder coated white.

### IS3 - Industry Standards -

NEMA Type 3R, 12 & Type 13  
UL Listed Type 3R & 12  
CSA Type 3R & 12  
IEC 60529 IP55

\*\*\*Special Instructions apply for IS3, IS4 and IS6 to maintain the environmental rating of Type 3R for these parts. See Special Instructions on the Industry Standards page in the Technical Information Section.

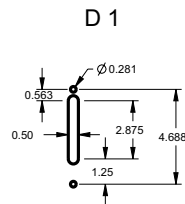
## HEAVY DUTY FREE-STANDING ENCLOSURES FOR FLANGE-MOUNTED DISCONNECTS THREE-DOOR ENCLOSURES

ENCLOSURE PRODUCT CODE A2						SUB-PANEL (P3)			
Catalog No.	Height (A)	Width (B)	Depth (C)	Industry Standard	List Price	Catalog No.	Panel Height (D)	Panel Width (E)	List Price
SCE-72XM3EQ18	72.00	99.50	18.00	IS3	4,363.92	SCE-64P31** & SCE-64P64**	60.00	27.75	1180.00
SCE-72XM3EQ18G	72.00	99.50	18.00	IS3	4,498.58	SCE-64P31GALV** & SCE-64P64GALV**	60.00	27.75	1180.00
SCE-72XM3EW18	72.00	117.50	18.00	IS3	4,912.10	SCE-64P37** & SCE-64P76**	60.00	33.75	1180.00
SCE-72XM3EW18G	72.00	117.50	18.00	IS3	5,067.85	SCE-64P37GALV** & SCE-64P76GALV**	60.00	33.75	1200.00
SCE-84XM3EW18	84.00	117.50	18.00	IS3	5,476.74	SCE-76P37** & SCE-76P76**	72.00	33.75	1250.00
SCE-84XM3EW18G	84.00	117.50	18.00	IS3	5,665.82	SCE-76P37GALV** & SCE-76P76GALV**	72.00	33.75	1280.00
SCE-84XM3EW24	84.00	117.50	24.00	IS3	5,541.31	SCE-76P37** & SCE-76P76**	72.00	33.75	1250.00
SCE-84XM3EW24G	84.00	117.50	24.00	IS3	5,730.36	SCE-76P37GALV** & SCE-76P76GALV**	72.00	33.75	1280.00
SCE-90XM3EW24	90.00	117.50	24.00	IS3	6,111.01	SCE-82P37** & SCE-82P76**	78.00	33.75	1270.00
SCE-90XM3EW24G	90.00	117.50	24.00	IS3	6,305.68	SCE-82P37GALV** & SCE-82P76GALV**	78.00	33.75	1300.00

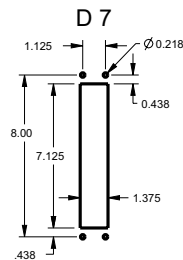
### XM ENCLOSURES

\* Add the letter U to the end of the part number for enclosures with a universal disconnect cutout.

Standard Disconnect cutout provided



Universal Disconnect cutout



Part numbers ending in "G" have galvanized sub-panels installed.

\*\* Sub-panel included with enclosure. Replacement sub-panels can be ordered. Prices found in the accessory section.

1 Operator System Enclosures  
 2 Wall-Mount Enclosures  
 3 Free-Standing & Floor-Mounted Enclosures  
 4 Modular Enclosures  
 5 Operator System Enclosures (Stainless Steel)  
 6 Wall-Mount Enclosures (Stainless Steel)  
 7 Free-Standing & Floor-Mounted Enclosures (Stainless Steel)  
 8 Non-Metallic Enclosures  
 9 Accessories  
 10 Technical Information  
 11 Index

## HEAVY DUTY FREE-STANDING ENCLOSURES FOR FLANGE-MOUNTED DISCONNECTS FOUR-DOOR ENCLOSURES



ENCLOSURE PRODUCT CODE A2						SUB-PANEL (P3)			
Catalog No.	Height (A)	Width (B)	Depth (C)	Industry Standard	List Price	Catalog No.	Panel Height (D)	Panel Width (E)	List Price
SCE-84XM4EW18	84.00	157.50	18.00	IS3	7,541.85	SCE-76P76**(2)	72.00	72.00	1,498.00
SCE-84XM4EW18G	84.00	157.50	18.00	IS3	7,837.86	SCE-76P76GALV**(2)	72.00	72.00	1,623.00
SCE-84XM4EW24	84.00	157.50	24.00	IS3	7,622.34	SCE-76P76**(2)	72.00	72.00	1,498.00
SCE-84XM4EW24G	84.00	157.50	24.00	IS3	7,918.37	SCE-76P76GALV**(2)	72.00	72.00	1,623.00
SCE-90XM4EW18	90.00	157.50	18.00	IS3	7,834.29	SCE-82P76**(2)	78.00	72.00	1,561.00
SCE-90XM4EW18G	90.00	157.50	18.00	IS3	8,131.80	SCE-82P76GALV**(2)	78.00	72.00	1,626.00
SCE-90XM4EW24	90.00	157.50	24.00	IS3	8,022.10	SCE-82P76**(2)	78.00	72.00	1,561.00
SCE-90XM4EW24G	90.00	157.50	24.00	IS3	8,319.62	SCE-82P76GALV**(2)	78.00	72.00	1,626.00

## FIVE-DOOR ENCLOSURES

ENCLOSURE PRODUCT CODE A2						SUB-PANEL (P3)			
Catalog No.	Height (A)	Width (B)	Depth (C)	Industry Standard	List Price	Catalog No.	Panel Height (D)	Panel Width (E)	List Price
SCE-84XM5EW18	84.00	196.75	18.00	IS3	9,174.91	SCE-76P76**(2)	72.00	72.00	1,498.00
SCE-84XM5EW18G	84.00	196.75	18.00	IS3	9,521.77	SCE-76P76GALV**(2)	72.00	72.00	1,623.00
SCE-84XM5EW24	84.00	196.75	24.00	IS3	9,455.00	SCE-76P76**(2)	72.00	72.00	1,498.00
SCE-84XM5EW24G	84.00	196.75	24.00	IS3	9,801.96	SCE-76P76GALV**(2)	72.00	72.00	1,623.00
SCE-90XM5EW18	90.00	196.75	18.00	IS3	9,584.80	SCE-82P76**(2)	78.00	72.00	1,561.00
SCE-90XM5EW18G	90.00	196.75	18.00	IS3	9,983.32	SCE-82P76GALV**(2)	78.00	72.00	1,626.00
SCE-90XM5EW24	90.00	196.75	24.00	IS3	9,905.90	SCE-82P76**(2)	78.00	72.00	1,561.00
SCE-90XM5EW24G	90.00	196.75	24.00	IS3	10,259.43	SCE-82P76GALV**(2)	78.00	72.00	1,626.00

## SIX-DOOR ENCLOSURES

ENCLOSURE PRODUCT CODE A2						SUB-PANEL (P3)			
Catalog No.	Height (A)	Width (B)	Depth (C)	Industry Standard	List Price	Catalog No.	Panel Height (D)	Panel Width (E)	List Price
SCE-84XM6EW24	84.00	235.00	24.00	IS3	11,522.27	SCE-76P76**(2)	72.00	72.00	1,498.00
SCE-84XM6EW24G	84.00	235.00	24.00	IS3	11,974.53	SCE-76P76GALV**(2)	72.00	72.00	1,623.00
SCE-90XM6EW24	90.00	235.00	24.00	IS3	11,945.82	SCE-82P76**(2)	78.00	72.00	1,561.00
SCE-90XM6EW24G	90.00	235.00	24.00	IS3	12,400.37	SCE-82P76GALV**(2)	78.00	72.00	1,626.00

Part numbers ending in "G" have galvanized sub-panels installed.

\*\*Sub-panel included with enclosure. Replacement sub-panels can be ordered.  
Prices found in the accessory section.

## Heavy Duty Free-Standing Enclosures For Flange-Mounted Disconnects

### Application -

Designed to house electrical equipment and provide degree of protection from dirt, dust, oil and water and to house most standard type disconnects. For installation information, consult our Installation Manual at [www.saginawcontrol.com](http://www.saginawcontrol.com).

### Construction -

- 0.125" carbon steel.
- Seams continuously welded and ground smooth.
- Flange trough collar around all sides of door opening.
- Body stiffeners in large enclosures for extra rigidity.
- Heavy duty lifting eyes anchor into reinforced top.
- Removable center posts permit easy sub-panel installation.
- Concealed hinges.
- Black zinc die cast coinproof/padlocking handle on main door with black zinc die cast padlocking handle on slave doors.
- 3-point latching mechanism.
- Ends of latch rods have ramp shoes for easier door closing.
- Panel supports.
- Large removable print pockets.
- Oil-resistant gasket.
- Removable panels mount on collar studs.
- Master door is far right-hand door on all enclosures.
- Defeater on master door requires a screwdriver to open.
- Mechanical interlock activated by master door prevents slave doors from being opened first. Doors can be closed in any order.
- Hole plugs provided to seal holes in bottom of enclosure.
- Ground stud on door and body.
- Provisions for light kit.

**Disconnect switch (or circuit breaker) and operating mechanism are not furnished with enclosure.**

### Finish -

ANSI-61 gray powder coated inside and out. Sub-panels powder coated white.

### IS3 - Industry Standards -

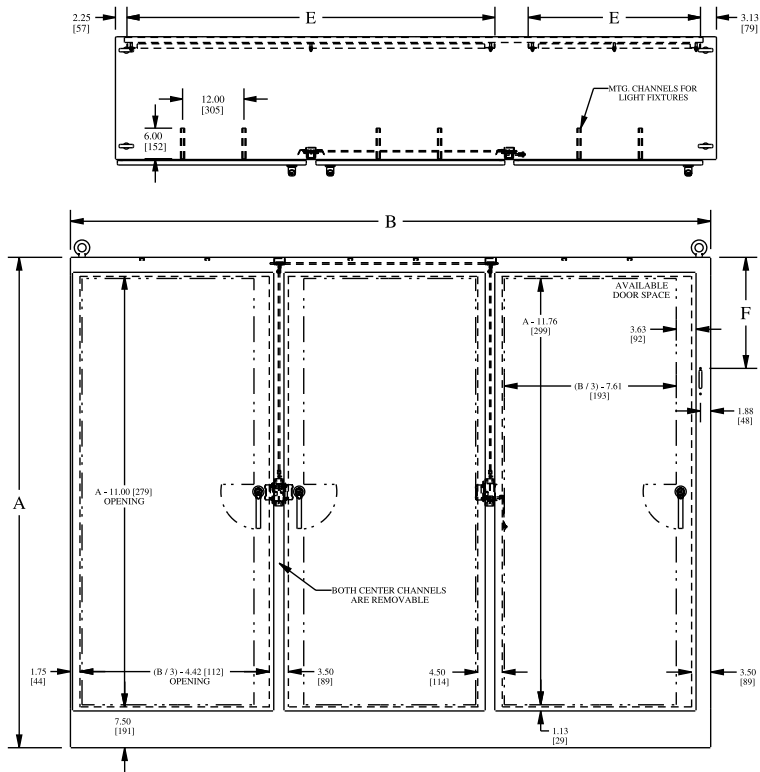
NEMA Type 3R, 12 & Type 13  
UL Listed Type 3R & 12  
CSA Type 3R & 12  
IEC 60529 IP55

\*\*\*Special Instructions apply for IS3, IS4 and IS6 to maintain the environmental rating of Type 3R for these parts. See Special Instructions on the Industry Standards page in the Technical Information Section.

# HEAVY DUTY FREE-STANDING ENCLOSURES FOR FLANGE-MOUNTED DISCONNECTS

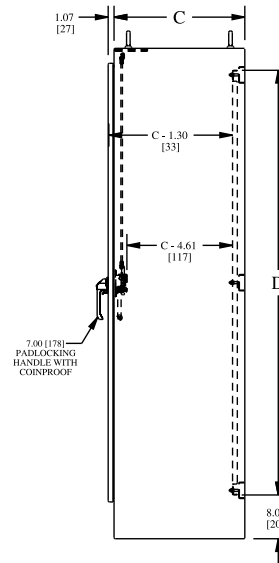
## TECHNICAL DATA

### THREE-DOOR ENCLOSURE

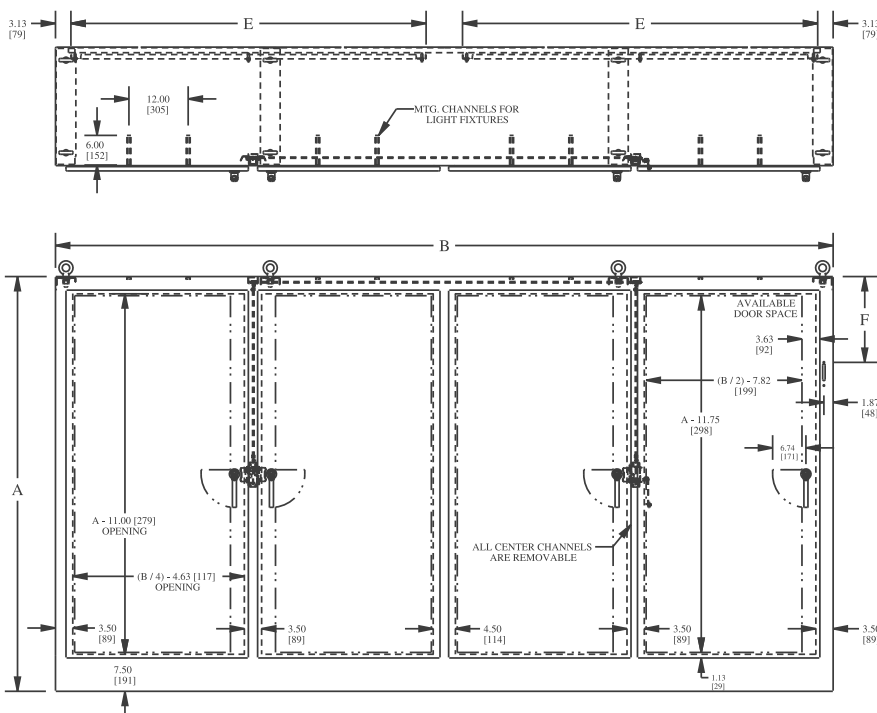


STANDARD DISCONNECTS:  
 F = 11.88 [301.7] when A = 72.00 [1828.8]  
 F = 17.38 [441.4] when A = 84.00 [2133.6]  
 F = 20.38 [517.6] when A = 90.00 [228.6]

U TYPE (Universal) DISCONNECTS:  
 F = 11.88 [301.8] when A = 72  
 F = 17.63 [447.8] when A = 84 & 90

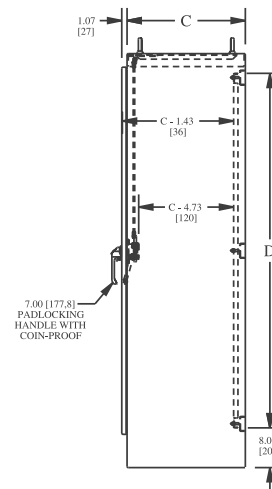


### FOUR-DOOR ENCLOSURE



STANDARD DISCONNECTS:  
 F = 11.88 [301.7] when A = 72.00 [1828.8]  
 F = 17.38 [441.4] when A = 84.00 [2133.6]  
 F = 20.38 [517.6] when A = 90.00 [228.6]

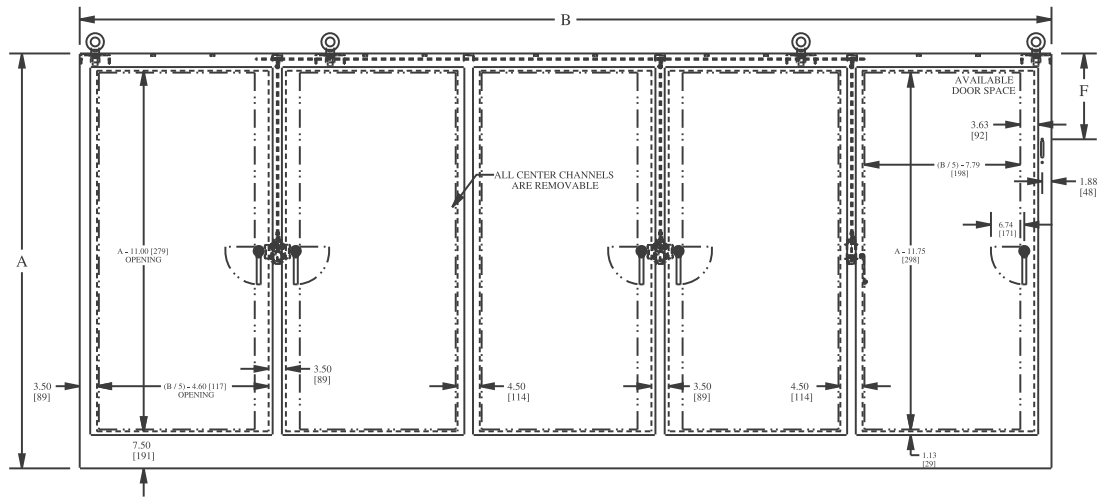
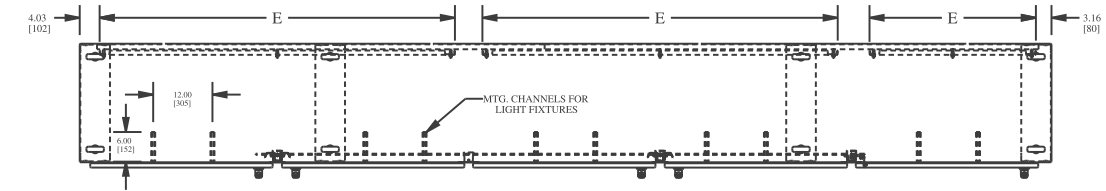
U TYPE (Universal) DISCONNECTS:  
 F = 17.63 [447.8]



# HEAVY DUTY FREE-STANDING ENCLOSURES FOR FLANGE-MOUNTED DISCONNECTS

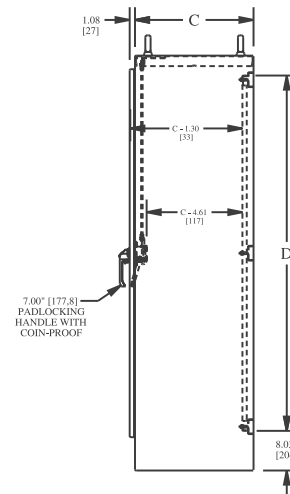
## TECHNICAL DATA

### FIVE-DOOR ENCLOSURE



STANDARD DISCONNECTS:  
 F = 11.88 [301,7] when A = 72.00 [1828,8]  
 F = 17.38 [441,4] when A = 84.00 [2133,6]  
 F = 20.38 [517,6] when A = 90.00 [228,6]

U TYPE (Universal) DISCONNECTS:  
 F = 17.63 [447,8]



Phone (989) 799-6871  
 Fax (989) 799-4524

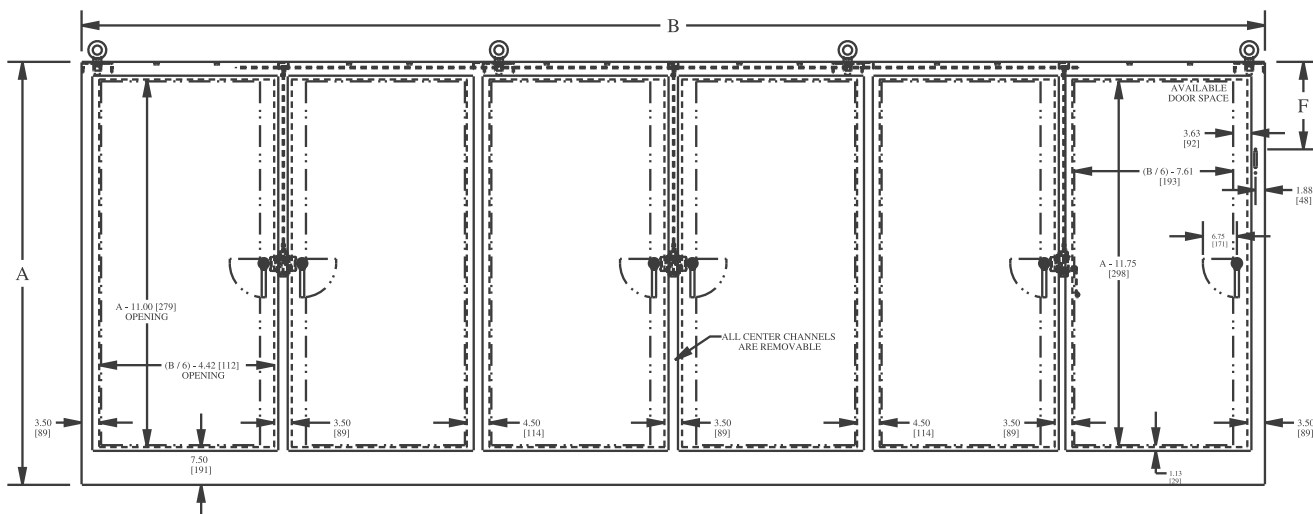
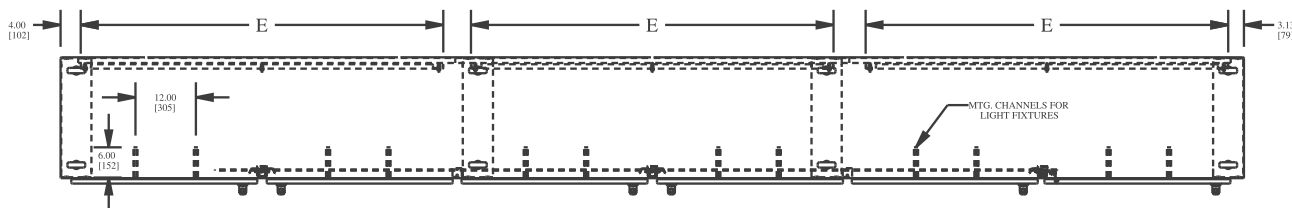


1 Operator System Enclosures  
 2 Wall-Mount Enclosures  
 3 Free-Standing & Floor-Mounted Enclosures  
 4 Modular Enclosures  
 5 Operator System Enclosures (Stainless Steel)  
 6 Wall-Mount Enclosures (Stainless Steel)  
 7 Free-Standing & Floor-Mounted Enclosures (Stainless Steel)  
 8 Non-Metallic Enclosures  
 9 Accessories  
 10 Technical Information  
 11 Index

# HEAVY DUTY FREE-STANDING ENCLOSURES FOR FLANGE-MOUNTED DISCONNECTS

## TECHNICAL DATA

### SIX-DOOR ENCLOSURE



**STANDARD DISCONNECTS:**

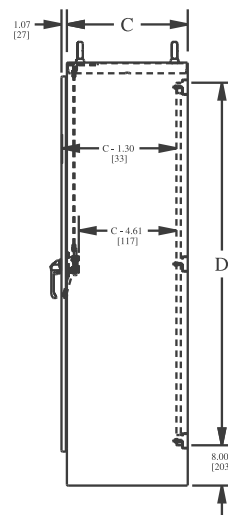
F = 11.88 [301,7] when A = 72.00 [1828,8]

F = 17.38 [441,4] when A = 84.00 [2133,6]

F = 20.38 [517,6] when A = 90.00 [228,6]

**U TYPE (Universal) DISCONNECTS:**

F = 17.63 [447,8]



Phone (989) 799-6871  
Fax (989) 799-4524