

# WORK STATION

## Application

Designed to house a computer, keyboard, monitor and other additional computer equipment in an industrial environment and provide degree of protection from dust, oil and moisture. For installation information, consult our Installation Manual at [www.saginawcontrol.com](http://www.saginawcontrol.com).

## Construction

- 0.075" carbon steel.
- Seams continuously welded and ground smooth.
- Pour in place oil and water resistant gasket.
- Flange trough collar around all sides of door opening.
- Concealed hinges.
- Removable doors.
- Ground studs on door and body.
- Large polycarbonate viewing window in top door.
- Lifting eyes for easy handling.
- Rubber pads with provision for leveling pads on bottom of enclosure.
- Black quarter turn latches on top door.
- Black quarter turn wing knob latches on keyboard door.
- Black 3-point flush swing handle in lower front and back doors.
- Gland plate on lower back of enclosure.
- Pullout keyboard shelf with attached self storing mouse shelf and mouse pad.
- Mounting channels welded on sides of interior body for mounting optional sub-panels, racks, mounting angles and shelves.

## Options

Optional tamper-resistant inserts or padlocking handles are available.

Accessories - See Page 38-44

## Finish

RAL 7035 gray powder coated inside and out.

## IS1 Industry Standards

NEMA Type 12 & Type 13  
UL Listed Type 12  
CSA Type 12  
IEC 60529 IP55

## WORK STATION

Enclosure Product Code C2

Catalog No.	Height (A)	Width (B)	Depth (C)	Top Size (D)	Industry Standard
<a href="#">SCE-642424WS</a>	64.00	24.25	24.25	22.15	IS1
<a href="#">SCE-642432WS</a>	64.00	24.25	32.25	22.15	IS1



# PEDESTAL MOUNT/DESKTOP WORK STATION

## Application

Designed to house a computer, keyboard, monitor and other additional computer equipment in an industrial environment and provide degree of protection from dust, oil and moisture. For installation information, consult our Installation Manual at [www.saginawcontrol.com](http://www.saginawcontrol.com).

## Construction

- 0.075" carbon steel.
- Seams continuously welded and ground smooth.
- Pour in place oil and water resistant gasket.
- Flange trough collar around all sides of door opening.
- Concealed hinges.
- Removable doors.
- Ground studs on door and body.
- Large polycarbonate viewing window.
- Lifting eyes for easy handling.
- Black quarter turn latches on top door.
- Black quarter turn wing knob latches on keyboard door.
- Black 3-point flush swing handle in back door.
- Pullout keyboard shelf with attached self storing mouse shelf and mouse pad.
- Mounting channels welded on sides of interior body for mounting optional sub-panels, racks, mounting angles and shelves.

## Options

Optional tamper-resistant inserts or padlocking handles are available.

Accessories - See Page 38-44

## Finish

RAL 7035 gray powder coated inside and out.

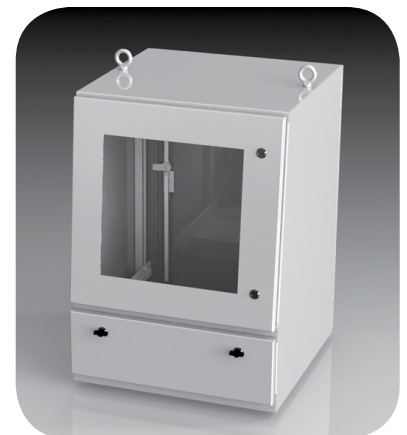
## IS1 Industry Standards

NEMA Type 12 & Type 13  
UL Listed Type 12  
CSA Type 12  
IEC 60529 IP55

## PEDESTAL MOUNT/DESKTOP WORK STATION

Enclosure Product Code C2

Catalog No.	Height (A)	Width (B)	Depth (C)	Top Size (D)	Industry Standard
<a href="#">SCE-342424WS</a>	34.00	24.25	24.25	22.15	IS1



# SLOPE TOP WORK STATION

## Application

Designed to house a computer, keyboard, monitor and other additional computer equipment in an industrial environment and provide degree of protection from dust, oil and moisture. For installation information, consult our Installation Manual at [www.saginawcontrol.com](http://www.saginawcontrol.com).

Enclosure Product Code C2

Catalog No.	Height (A)	Width (B)	Depth (C)	Industry Standard
<a href="#">SCE-66ST2626WS</a>	65.59	26.00	26.00	IS1

## Construction

- 0.075 In. carbon steel.
- Seams continuously welded and ground smooth.
- 15 degree sloped top.
- 12.5 degree sloped keyboard desk.
- Pour in place oil & water resistant gasket
- Flange trough collar around all sides of door opening.
- Concealed hinges.
- Removable doors.
- Ground studs on door and body.
- Large polycarbonate viewing window in top door.
- Lifting eyes for easy handling.
- Rubber pads with provision for leveling pads on bottom of enclosure.
- Black quarter turn latches on top door.
- Black 3-point flush swing handle in lower front and back doors.
- Gland plate on lower back of enclosure.
- Mounting channels welded on sides of interior body for mounting optional panels, racks, mounting angles and shelves.
- Provisions for Monitor Mounting Strap System.
- Pencil edge palm rest.

## Options

Optional tamper-resistant inserts or padlocking handles are available.

Accessories - See Page 38-44

## Finish

Powder coated white inside and out.

## IS1 Industry Standards

NEMA Type 12 & Type 13  
UL Listed Type 12  
CSA Type 12  
IEC 60529 IP55

