

MOUNTING PANELS

Stainless Steel Sub-Panels

Construction -

Sub-panels are constructed from stainless steel. Size determines steel thickness.

Finish -

Configuration A - (Example: SCE-12P10SS). Sub-panels are made of 316/316L stainless steel with #4 brushed finish.

Configuration B & C - (Example: SCE-30P30SS) Sub-panels are made of 304 stainless steel with #4 brushed finish.

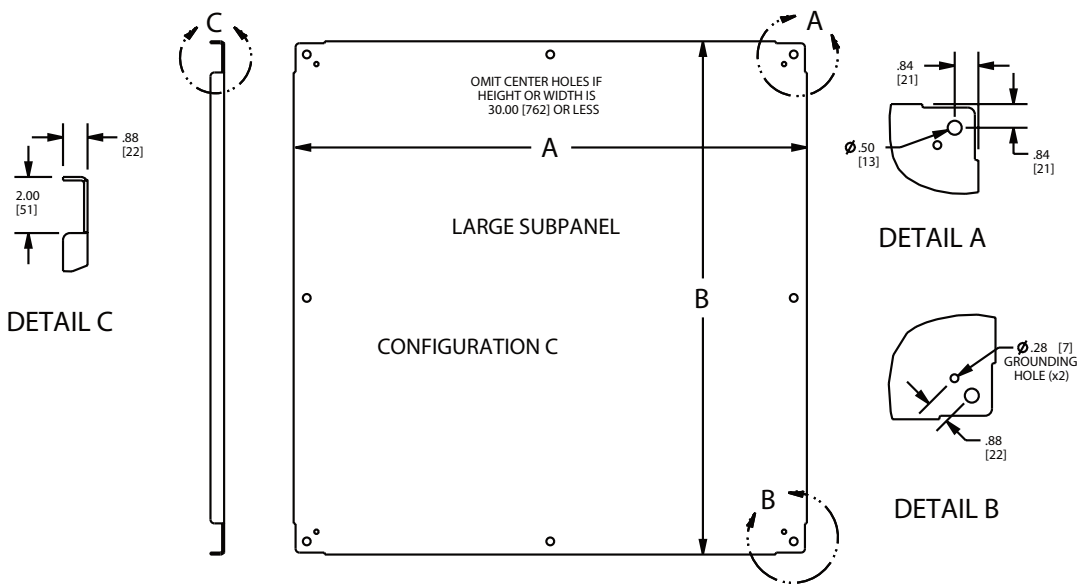
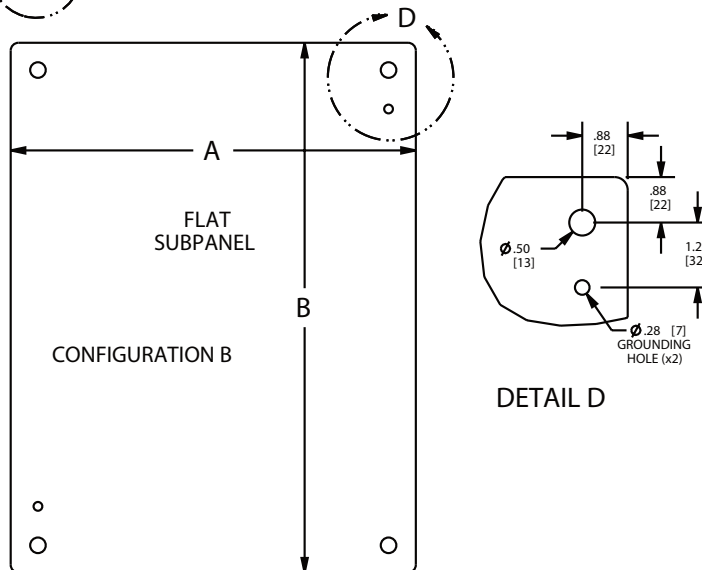
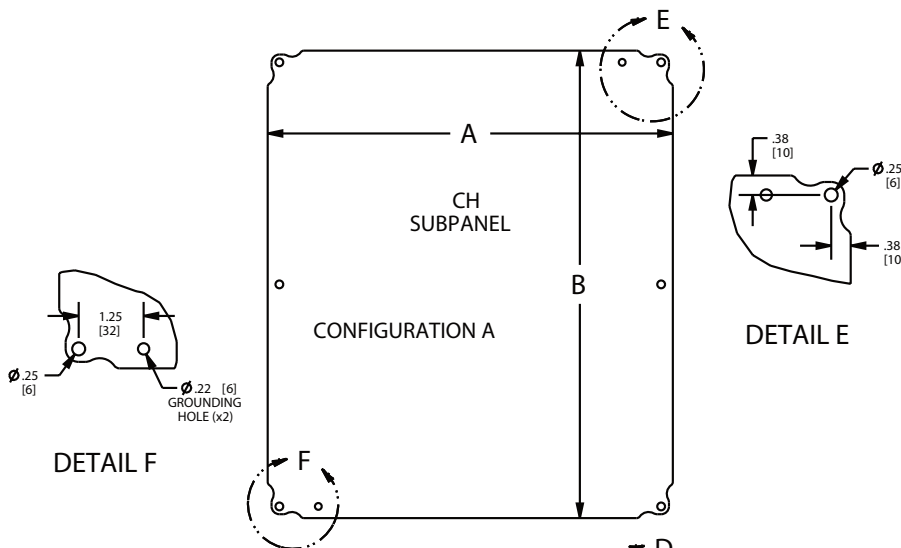
Options -

Configuration B & C - Add (6) to the end of the sub-panel part number for 316/316L stainless steel (Example: SCE-30P30SS6).

Catalog No.	Height (A)	Width (B)	Configuration	Edge Flanges	Product Code	List Price
SCE-82P37	78.00	33.75	A	Flat	P3	278.51
SCE-82P76	78.00	72.00	A	Flat	P3	501.32
SCE-6P4SS	5.00	3.00	A	Flat	P3	7.54
SCE-6P6SS	5.00	5.00	A	Flat	P3	9.01
SCE-8P6SS	7.00	5.00	A	Flat	P3	10.43
SCE-10P8SS	9.00	7.00	A	Flat	P3	14.27
SCE-10P10SS	9.00	9.00	A	Flat	P3	16.81
SCE-12P10SS	11.00	9.00	A	Flat	P3	19.31
SCE-12P12SS	11.00	11.00	A	Flat	P3	22.72
SCE-14P12SS	13.00	11.00	A	Flat	P3	25.34
SCE-16P12SS	13.00	9.00	B	Flat	P3	37.03
SCE-16P14SS	15.00	13.00	B	Flat	P3	49.87
SCE-16P16SS	13.00	13.00	B	Flat	P3	68.73
SCE-20P16SS	17.00	13.00	C	Four	P3	75.91
SCE-20P20SS	17.00	17.00	C	Four	P3	88.62
SCE-24P16SS	21.00	13.00	C	Four	P3	82.28
SCE-24P20SS	21.00	17.00	C	Four	P3	110.77
SCE-24P24SS	21.00	21.00	C	Four	P3	132.93
SCE-30P24SS	27.00	21.00	C	Four	P3	158.23
SCE-30P30SS	27.00	27.00	C	Four	P3	208.88
SCE-36P16SS	33.00	13.00	C	Four	P3	132.93
SCE-36P24SS	33.00	21.00	C	Four	P3	189.91
SCE-36P30SS	33.00	27.00	C	Four	P3	253.19
SCE-36P36SS	33.00	33.00	C	Four	P3	297.46
SCE-42P30SS	39.00	27.00	C	Four	P3	291.16
SCE-42P36SS	39.00	33.00	C	Four	P3	341.81
SCE-48P24SS	45.00	21.00	C	Four	P3	246.85
SCE-48P36SS	45.00	33.00	C	Four	P3	386.16

Phone (989) 799-6871
Fax (989) 799-4524





MOUNTING PANELS

Galvanized Sub-Panels

Construction -

Sub-panels are constructed from galvanized or galvanized steel for direct bonding of electrical components. Size determines steel thickness.

Finish -

Configuration A & B - (Example: SCE-12P10GALV). Sub-panels are made of galvanized steel.

Configuration C & D - (Example: SCE-30P30GALV) Sub-panels are made of galvanized steel.

Catalog No.	Height (A)	Width (B)	Configuration	Edge Flanges	Product Code	List Price
SCE-60P30SS	57.00	27.00	A	Flat	P3	398.79
SCE-60P36SS	57.00	33.00	A	Flat	P3	474.74
SCE-6P4GALV	5.00	3.00	A	Flat	P3	2.89
SCE-6P6GALV	5.00	5.00	A	Flat	P3	3.47
SCE-8P6GALV	7.00	5.00	A	Flat	P3	4.00
SCE-8P8GALV	7.00	7.00	A	Flat	P3	4.69
SCE-10P8GALV	9.00	7.00	B	Flat	P3	5.47
SCE-10P10GALV	9.00	9.00	A	Flat	P3	6.46
SCE-12DLP12GALV	9.00	9.00	A	Flat	P3	13.67
SCE-12P6GALV	11.00	5.00	A	Flat	P3	5.14
SCE-12P10GALV	11.00	9.00	C	Four	P3	7.41
SCE-12P12GALV	11.00	11.00	A	Flat	P3	8.72
SCE-12P24GALV	9.00	21.00	A	Flat	P3	27.86
SCE-14P8GALV	13.00	7.00	A	Flat	P3	7.09
SCE-14P12GALV	13.00	11.00	B	Flat	P3	9.72
SCE-16P10GALV	15.00	9.00	B	Flat	P3	9.50
SCE-16P12GALV	13.00	9.00	A	Flat	P3	14.81
SCE-16DLP14GALV	13.00	11.00	B	Flat	P3	17.72
SCE-16P14GALV	15.00	13.00	B	Flat	P3	19.15
SCE-16P16GALV	13.00	13.00	B	Flat	P3	24.57
SCE-20P12GALV	17.00	9.00	B	Flat	P3	23.14
SCE-20P16GALV	17.00	13.00	C	Four	P3	30.37
SCE-20P16JGALV	19.00	15.00	C	Four	P3	29.18
SCE-20P20GALV	17.00	17.00	C	Four	P3	35.44
SCE-24P16GALV	21.00	13.00	C	Four	P3	32.92
SCE-24P20GALV	21.00	17.00	C	Four	P3	47.85
SCE-24P24GALV	21.00	21.00	C	Four	P3	55.84
SCE-30P16GALV	27.00	13.00	C	Four	P3	47.85
SCE-30P20GALV	27.00	17.00	C	Four	P3	58.49
SCE-30P24GALV	27.00	21.00	C	Four	P3	66.45
SCE-30P30GALV	27.00	27.00	C	Four	P3	87.73
SCE-36P16GALV	33.00	13.00	C	Four	P3	55.84
SCE-36P24GALV	33.00	21.00	C	Four	P3	79.76
SCE-36P30GALV	33.00	27.00	C	Four	P3	111.40
SCE-36P36GALV	33.00	33.00	C	Four	P3	130.89
SCE-40P24GALV	37.00	21.00	C	Four	P3	94.69
SCE-42P24GALV	39.00	21.00	C	Four	P3	100.25
SCE-42P30GALV	39.00	27.00	C	Four	P3	128.12
SCE-42P36GALV	39.00	33.00	C	Four	P3	157.23
SCE-42P42GALV	39.00	39.00	C	Four	P3	180.52
SCE-48P24GALV	45.00	21.00	C	Four	P3	108.61
SCE-48P30GALV	45.00	27.00	C	Four	P3	142.04
SCE-48P36GALV	45.00	33.00	C	Four	P3	177.63
SCE-48P42GALV	45.00	39.00	C	Four	P3	203.83
SCE-48P48GALV	44.00	44.00	C	Four	P3	244.57
SCE-60P24GALV	57.00	21.00	C	Four	P3	142.04
SCE-60P30GALV	57.00	27.00	C	Four	P3	183.45
SCE-60P36GALV	57.00	33.00	D	Four	P3	218.37
SCE-60BFP42GALV	56.00	38.00	C	Four	P3	264.97
SCE-60P48GALV	56.00	44.00	C	Four	P3	308.64
SCE-60P60GALV	56.00	56.00	C	Four	P3	381.43