

Polycarbonate Enclosures

Application -

Designed for indoor or outdoor use to house electrical and electronic controls, instruments and components in areas that may be regularly hosed down or are in very wet conditions. Non-corrosive, UV resistant polycarbonate enclosure with opaque covers. Provides protection from dust, dirt, oil and water. For installation information, consult our Installation Manual at www.saginawcontrol.com.

Construction -

- Impact Resistant Polycarbonate.
- Opaque cover.
- Brass inserts for securing mounting feet.
- Polycarbonate external mounting feet included.
- Oil-resistant door gasket.
- Polycarbonate quick release latches.
- Polycarbonate hinges.
- Polycarbonate hasp and staple for padlocking.
- 10-32 standoffs provided for mounting optional panels.
- Multiple bosses for easy installation of devices and DIN rails.

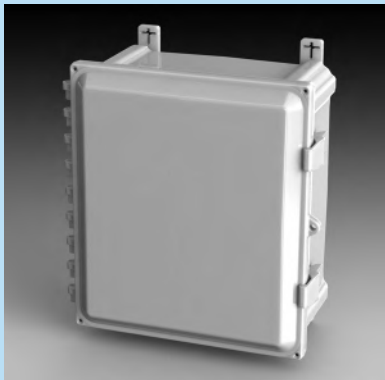
Finish -

RAL 7035 Light Gray Polycarbonate

IS6 - Industry Standards -

NEMA Type 3R, 4, 4X, 12 & Type 13
UL Listed Type 3R, 4, 4X & 12
CSA Type 3R, 4, 4X & 12
IEC 60529 IP66

***Special Instructions apply for IS3, IS4 and IS6 to maintain the environmental rating of Type 3R for these parts. See the Special Instructions on the Industry Standards page in the Technical Information Section.



POLYCARBONATE ENCLOSURES

ENCLOSURE PRODUCT CODE F1

Catalog No.	Height (A)	Width (B)	Depth (C)	Industry Standard	List Price
SCE-606PC	7.41	8.68	5.84	IS6	109.26
SCE-806PC	9.47	8.68	5.86	IS6	115.95
SCE-1008PC	11.41	10.68	6.36	IS6	126.06
SCE-1210PC	13.40	12.68	7.86	IS6	144.06
SCE-1412PC	15.40	14.68	7.89	IS6	182.22
SCE-1614PC	17.65	16.68	9.98	IS6	197.91
SCE-1816PC	19.41	18.68	11.90	IS6	254.82
SCE-2424PC	25.40	26.68	11.41	IS6	724.65

SUB-PANELS (F2)

Catalog No.	Panel Height (D)	Panel Width (E)	List Price
SCE-6P6	5.00	5.00	3.61
SCE-6P6AL	5.00	5.00	15.58
SCE-8P6	7.00	5.00	4.17
SCE-8P6AL	7.00	5.00	18.82
SCE-10P8	9.00	7.00	5.70
SCE-10P8AL	9.00	7.00	25.38
SCE-12P10	11.00	9.00	7.72
SCE-12P10AL	11.00	9.00	25.99
SCE-14P12	13.00	11.00	10.13
SCE-14P12AL	13.00	11.00	36.87
SCE-16P14	15.00	13.00	19.95
SCE-16P14AL	15.00	13.00	46.72
SCE-18P16PC	16.88	14.88	26.84
SCE-18P16AL	16.88	14.88	55.53
SCE-24P24PC	22.75	22.75	39.97
SCE-24P24PCAL	22.75	22.75	104.98

Phone (989) 799-6871
Fax (989) 799-4524

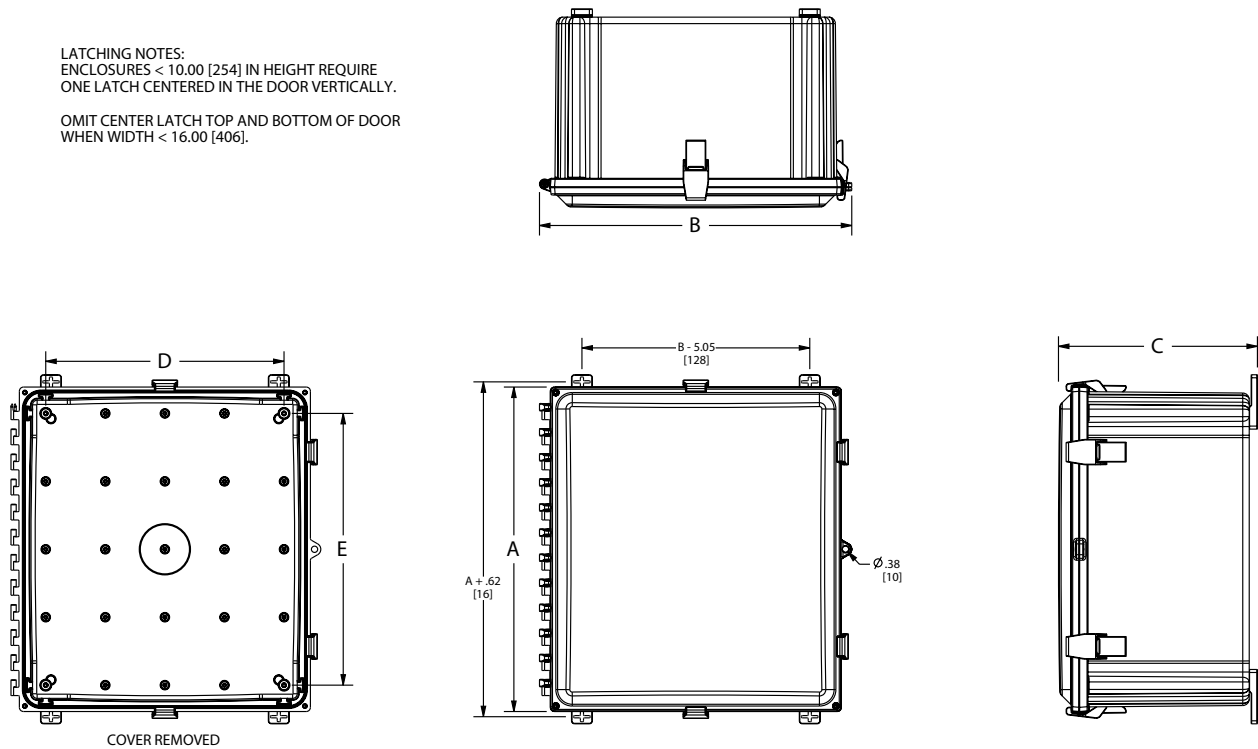


POLYCARBONATE ENCLOSURES

TECHNICAL DATA

LATCHING NOTES:
ENCLOSURES < 10.00 [254] IN HEIGHT REQUIRE
ONE LATCH CENTERED IN THE DOOR VERTICALLY.

OMIT CENTER LATCH TOP AND BOTTOM OF DOOR
WHEN WIDTH < 16.00 [406].



SCE-2424PC

