

Fiberglass Pushbutton Enclosures

Application -

Designed for indoor or outdoor use to house pushbuttons, switches, and pilot lights in areas that may be regularly hosed down, are in very wet conditions, or are exposed to corrosive agents. Provides protection from dust, dirt, oil and water.

Construction -

- Fiberglass reinforced compression molded polyester.
- Continuous memory retaining gasket.
- Hole diameter is 1.20" (30.5 mm).

Finish -

Light gray fiberglass.

IS5 - Industry Standards -

NEMA Type 4, 4X, 12 & Type 13

UL Listed Type 4, 4X & 12

CSA Type 4, 4X & 12

IEC 60529 IP66



FIBERGLASS PUSHBUTTON ENCLOSURES

ENCLOSURE PRODUCT CODE F1							
Catalog No.	Height (A)	Width (B)	Depth (C)	Mounting (G)	Mounting (H)	Industry Standard	List Price
SCE-1PBFG	6.63	3.81	3.88	4.88	2.94	IS5	78.24
SCE-2PBFG	6.63	3.81	3.88	4.88	2.94	IS5	80.28
SCE-3PBFG	8.88	3.81	3.88	7.13	2.94	IS5	88.61

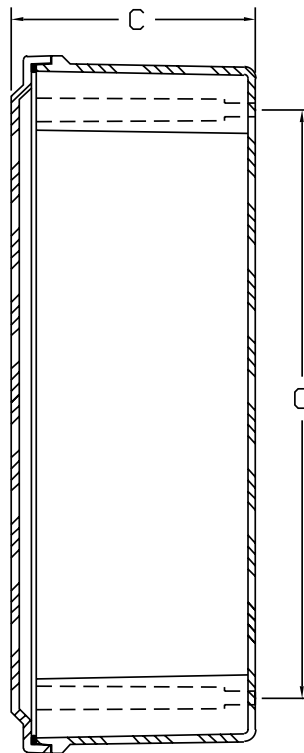
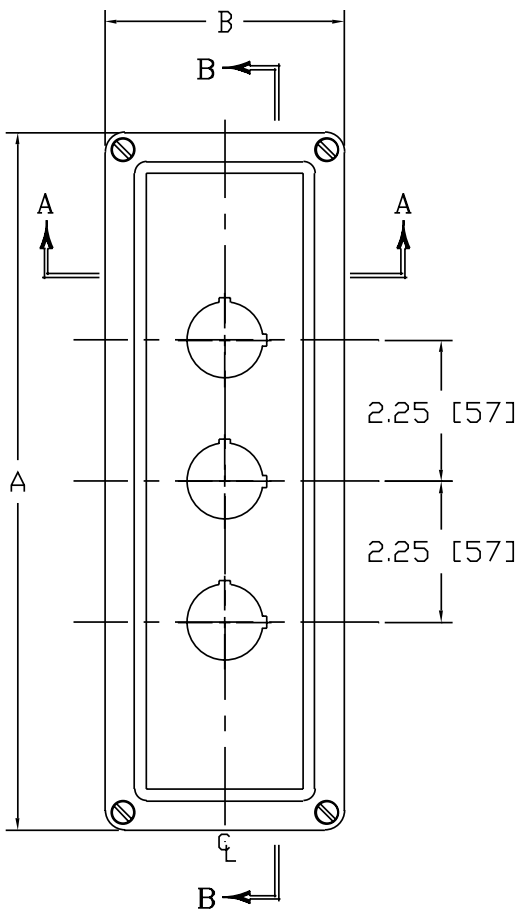
Phone (989) 799-6871

Fax (989) 799-4524

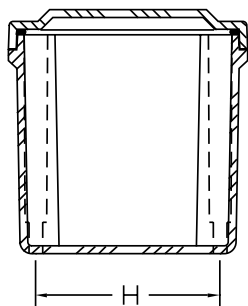


FIBERGLASS PUSHBUTTON ENCLOSURES

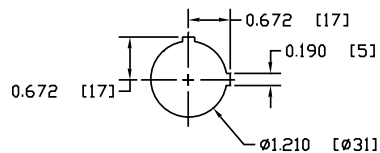
TECHNICAL DATA



SECTION B-B



SECTION A-A



DETAIL A