

Sloping Front 30.5 mm Pushbutton Enclosures

Application -

Designed to offer protection for all standard brands of oil-tight pushbuttons, switches, and pilot lights where slanted surfaces are desired. It offers protection from dust, dirt, oil and water. For installation information, consult our Installation Manual at www.saginawcontrol.com.

Construction -

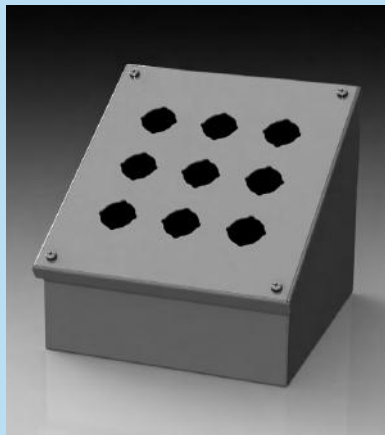
- 0.063" carbon steel.
- Continuously welded seams.
- Captivated cover screws thread into sealed wells.
- 4-way standard pushbutton holes accept all brands of oil-tight pushbuttons, switches, and pilot lights. Hole diameter is 1.20" (30.5 mm).
- Immediate removal of cover is permitted.
- Oil-resistant door gasket.
- Mounting feet included.
- Provisions for sub-panel..

Finish -

ANSI-61 Gray powder coat inside and out. Optional sub-panels powder coated white.

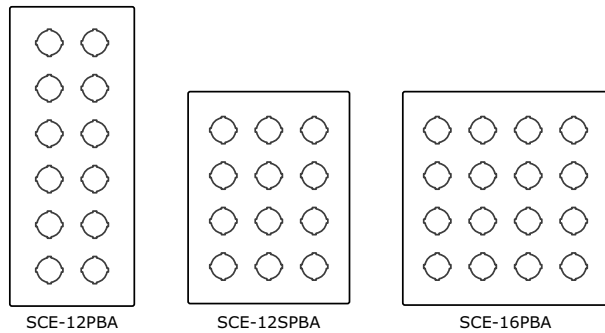
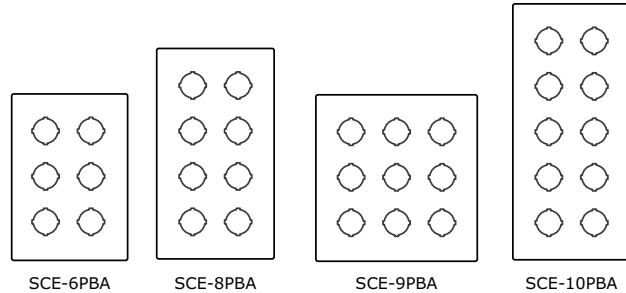
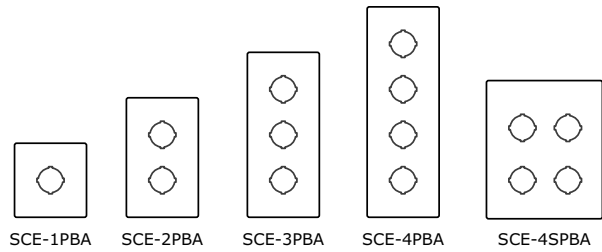
IS2 - Industry Standards -

- NEMA Type 4, 12 & Type 13
- UL Listed Type 4 & 12
- CSA Type 4 & 12
- IEC 60529 IP66



SLOPING FRONT 30.5 mm PUSHBUTTON ENCLOSURES

ENCLOSURE PRODUCT CODE A1							SUB-PANEL (P3)			
Catalog No.	Height (A)	Width (B)	Depth (C)	ref. Depth (D)	Industry Standard	List Price	Catalog No.	Panel Height (D)	Panel Width (E)	List Price
SCE-1PBA	3.50	3.25	4.87	3.53	IS2	65.22	No Panel			
SCE-2PBA	3.50	5.50	4.87	3.53	IS2	75.24	No Panel			
SCE-3PBA	3.50	7.75	4.87	3.53	IS2	85.28	No Panel			
SCE-4PBA	3.50	10.00	4.87	3.53	IS2	96.56	No Panel			
SCE-4SPBA	7.25	6.25	6.75	6.78	IS2	107.85	SCE-6P6	5.00	5.00	3.61
SCE-6PBA	7.25	8.50	6.75	6.78	IS2	125.41	SCE-8P6	7.00	5.00	4.17
SCE-8PBA	7.25	10.75	6.75	6.78	IS2	141.70	SCE-10P6	9.00	5.00	4.89
SCE-9PBA	9.50	8.50	7.88	8.73	IS2	147.97	SCE-8P8	7.00	7.00	4.89
SCE-10PBA	7.25	13.00	6.75	6.78	IS2	158.02	SCE-12P6	11.00	5.00	5.35
SCE-12PBA	7.25	15.25	6.75	6.78	IS2	171.82	SCE-14P6	13.00	5.00	5.98
SCE-12SPBA	11.75	8.50	9.00	10.69	IS2	164.28	SCE-10P8	9.00	7.00	5.70
SCE-16PBA	11.75	10.75	9.00	10.69	IS2	183.10	SCE-10P10	9.00	9.00	6.73



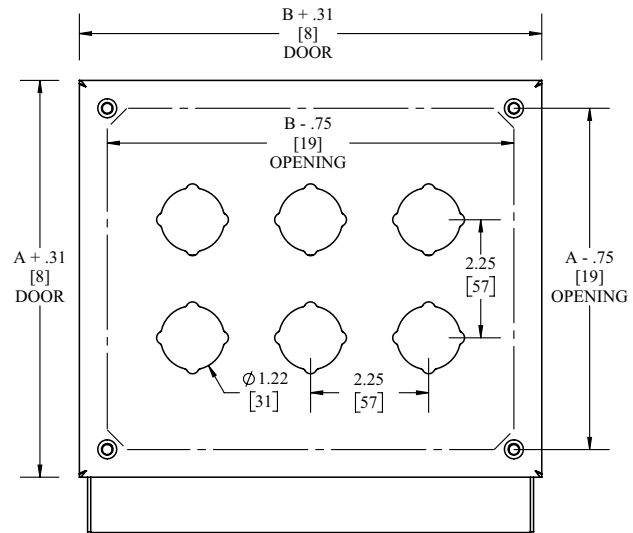
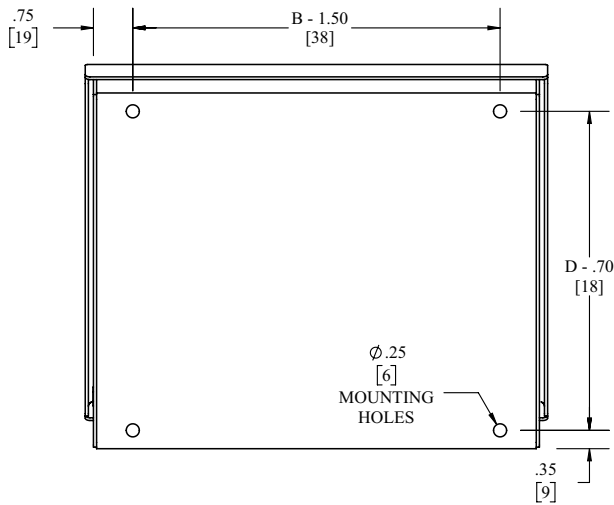
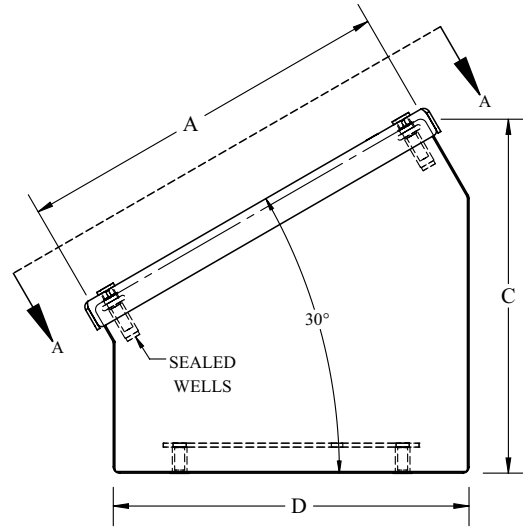
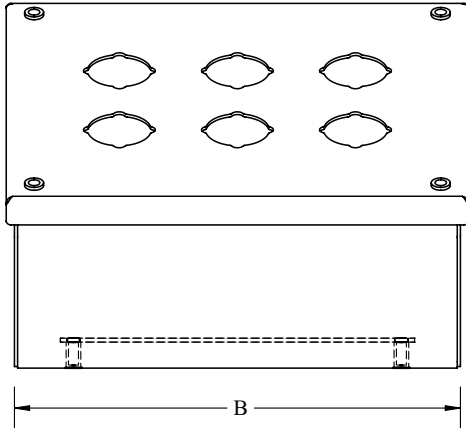
Phone (989) 799-6871
Fax (989) 799-4524



1 Operator System Enclosures
 2 Wall-Mount Enclosures
 3 Free-Standing & Floor-Mounted Enclosures
 4 Modular Enclosures
 5 Operator System Enclosures (Stainless Steel)
 6 Wall-Mount Enclosures (Stainless Steel)
 7 Free-Standing & Floor-Mounted Enclosures (Stainless Steel)
 8 Non-Metallic Enclosures
 9 Accessories
 10 Technical Information
 11 Index

SLOPING FRONT 30.5 mm PUSHBUTTON ENCLOSURES

TECHNICAL DATA



VIEW A-A