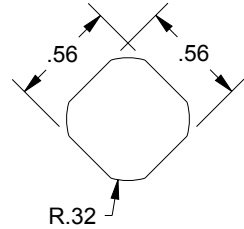
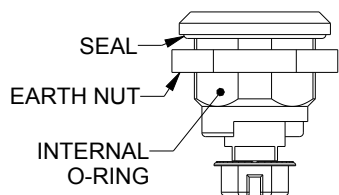
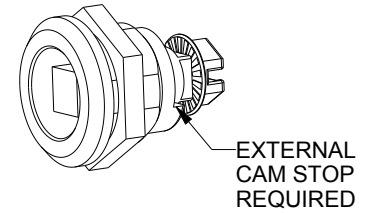
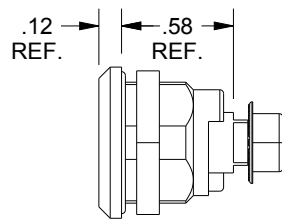
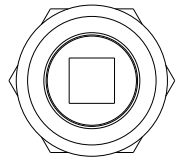
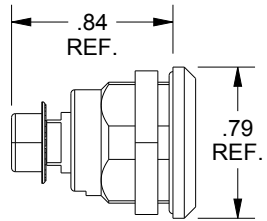
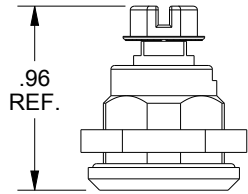


SAGINAW CONTROL & ENGINEERING

SCE-MINQ6MS, PART I.D. 108152



TO MAINTAIN TYPE
3, 3R, 4, 4X & 12

DESCRIPTION:
MINIATURE QUARTER TURN, 6 MM SQUARE
INSERT W/KEY, EXTERNAL CAM STOP,
NO CAM, ZINC DIE CAST, BLACK TEXTURED