

Multi-Door Enclosures

Application -

Designed to house electrical equipment and provide degree of protection from dirt, dust, oil and water. For installation information, consult our Installation Manual at www.saginawcontrol.com.

Construction -

- 0.125" carbon steel.
- Seams continuously welded and ground smooth.
- Heavy duty lifting eyes.
- Reinforced top.
- Steel stiffeners welded to back inside of enclosure.
- Overlapping two-door openings have no center post.
- Black zinc die cast padlocking handle.
- 3-point latching mechanism.
- Concealed hinges.
- Mechanical interlock.
- Far right hand door is main door.
- Panel supports.
- Removable sub-panels are mounted on collar studs.
- Oil-resistant door gasket.
- Ground stud on door and body.
- Removable print pocket.
- Flange trough collar around all sides of door opening.
- Hole plugs provided to seal holes in bottom of enclosure.
- Provisions for light kit.

Finish -

ANSI-61 gray powder coated inside and out. Sub-panels powder coated white.

IS3 - Industry Standards -

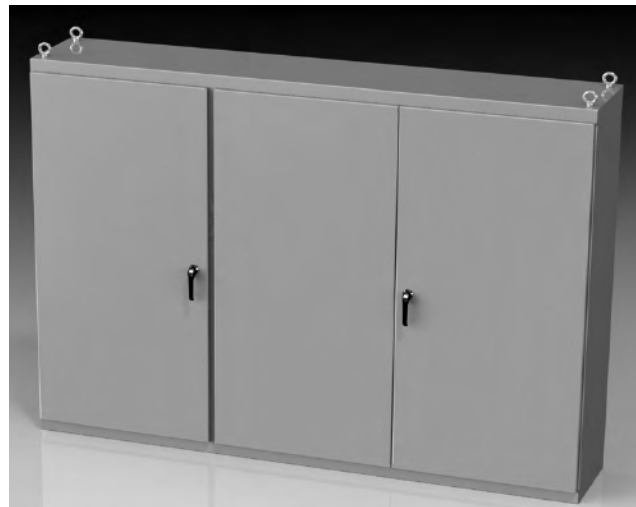
NEMA Type 3R, 12 & Type 13
UL Listed Type 3R & 12
CSA Type 3R & 12
IEC 60529 IP55

***Special Instructions apply for IS3, IS4 and IS6 to maintain the environmental rating of Type 3R for these parts. See the Special Instructions on the Industry Standards page in the Technical Information Section.

MULTI-DOOR ENCLOSURES

ENCLOSURE PRODUCT CODE A2						SUB-PANEL (P3)			
Catalog No.	Height (A)	Width (B)	Depth (C)	Industry Standard	List Price	Catalog No.	Panel Height (D)	Panel Width (E)	List Price
SCE-86M3E	86.00	112.00	14.00	IS3	5,160.24	SCE-82P76* & SCE-82P37*	78.00	72.00	1,276.51
SCE-86M3E20	86.00	112.00	20.00	IS3	5,701.76	SCE-82P76* & SCE-82P37*	78.00	72.00	1,276.51
SCE-86M4E	86.00	149.19	14.00	IS3	6,599.08	SCE-82P76* (2)	78.00	72.00	1,601.62
SCE-86M4E20	86.00	149.19	20.00	IS3	7,523.88	SCE-82P76* (2)	78.00	72.00	1,601.62
SCE-86M5E	86.00	187.00	14.00	IS3	8,416.60	SCE-82P76* (2) & SCE-82P37*	78.00	72.00	1,276.51
SCE-86M5E20	86.00	187.00	20.00	IS3	9,294.37	SCE-82P76* (2) & SCE-82P37*	78.00	72.00	1,276.51

**Sub-panel included with enclosure. Replacement sub-panels can be ordered. Prices found in the accessory section.

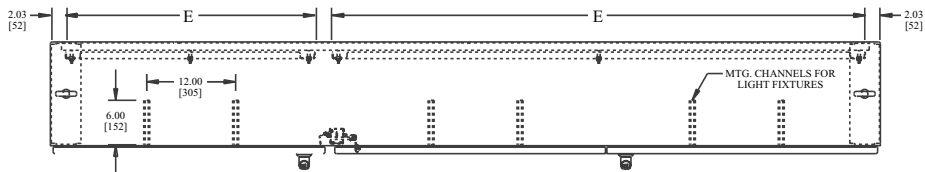


Phone (989) 799-6871
Fax (989) 799-4524

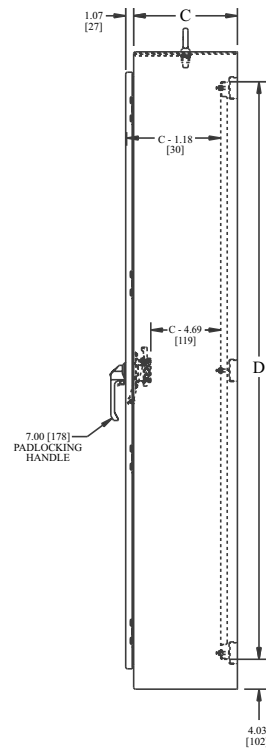
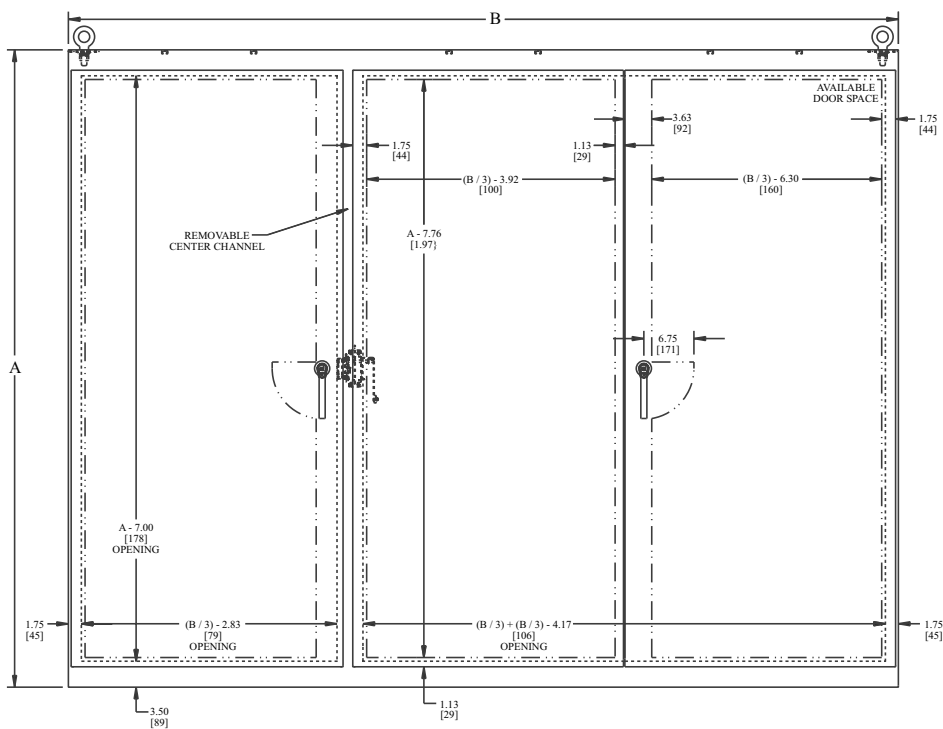


MULTI-DOOR ENCLOSURES TECHNICAL DATA

THREE-DOOR ENCLOSURE

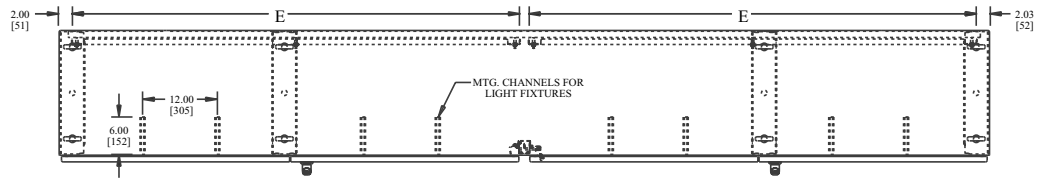


EYEBOLT NOTES:
Enclosure has one row of eyebolts when $C = 14.00$ " [356]
Enclosure has two rows of eyebolts when $C = 20.00$ " [508]

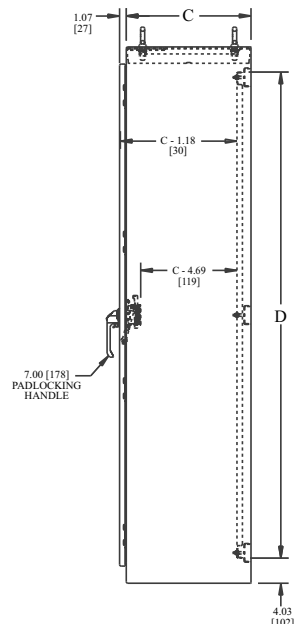
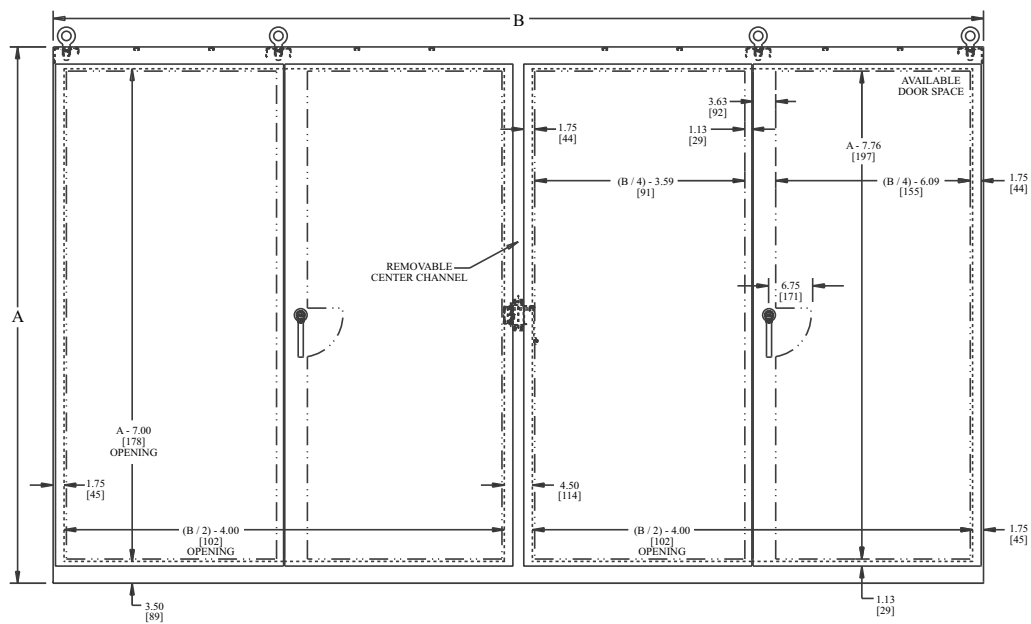


MULTI-DOOR ENCLOSURES TECHNICAL DATA

FOUR-DOOR ENCLOSURE



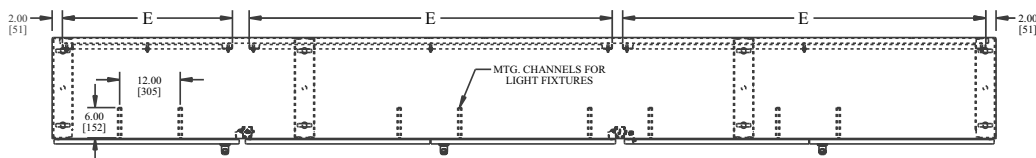
EYEBOLT NOTES:
Enclosure has one row of eyebolts when $C = 14.00$ " [356]
Enclosure has two rows of eyebolts when $C = 20.00$ " [508]



1 Operator System Enclosures
2 Wall-Mount Enclosures
3 Free-Standing & Floor-Mounted Enclosures
4 Modular Enclosures
5 Operator System Enclosures (Stainless Steel)
6 Wall-Mount Enclosures (Stainless Steel)
7 Free-Standing & Floor-Mounted Enclosures (Stainless Steel)
8 Non-Metallic Enclosures
9 Accessories
10 Technical Information
11 Index

MULTI-DOOR ENCLOSURES TECHNICAL DATA

FIVE-DOOR ENCLOSURE



EYEBOLT NOTES:
Enclosure has one row of eyebolts when C = 14.00" [356]
Enclosure has two rows of eyebolts when C = 20.00" [508]

