

Stainless Steel Enviroline® Series Trough Junction Enclosures with Viewing Window

Application -

Designed to house electrical controls, drives, instruments and components used in an indoor or outdoor environment to provide a degree of protection for the equipment inside the enclosure against ingress of solid foreign objects (falling dirt); and provide a degree of protection with respect to the harmful effects on the equipment due to the ingress of water (rain, sleet, snow). For installation information, consult our Installation Manual at www.saginawcontrol.com.

Construction -

- 0.063" stainless steel Type 304.
- Seams continuously welded and ground smooth.
- Flange trough collar around all sides of door opening.
- Large viewing windows.
- Oil-resistant gasket.
- Standoffs provided for mounting optional sub-panels.
- Removable hinges.
- Doors open 180 degrees.
- Black mini quarter turn latches.
- Latches are opened or closed with a screwdriver.
- Sealing washers and hole plugs included.
- Ground stud on door and body.
- Mounting holes in back.
- Mounting feet included.
- Padlocking or keylocking latches, and tamper-resistant hardware is available.

Finish -

#4 brushed finish on all exterior surfaces. Optional sub-panels powder coated white.

Notes -

Recommend use as Type 3R rating in full outdoor exposure and extreme weather environments.

For more details see *Design Considerations When Specifying Your Enclosure* on our website.

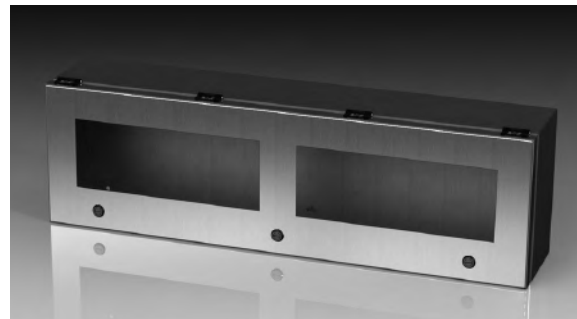
IS6 - Industry Standards -

NEMA Type 3R, 4, 4X, 12 & Type 13
UL Listed Type 3R, 4, 4X & 12
CSA Type 3R, 4, 4X & 12
IEC 60529 IP66

***Special Instructions apply for IS3, IS4 and IS6 to maintain the environmental rating of Type 3R for these parts. See the Special Instructions on the Industry Standards page in the Technical Information Section.

STAINLESS STEEL ENVIROLINE® SERIES TROUGH JUNCTION ENCLOSURES WITH VIEWING WINDOW

ENCLOSURE PRODUCT CODE S6						SUB-PANEL (P3)			
Catalog No.	Height (A)	Width (B)	Depth (C)	Industry Standard	List Price	Catalog No.	Panel Height (E)	Panel Width (F)	List Price
SCE-L9126ELJWSS	9.00	12.00	6.00	IS6	933.54	SCE-9P12L	8.00	11.00	18.86
SCE-L9128ELJWSS	9.00	12.00	8.00	IS6	989.55	SCE-9P12L	8.00	11.00	18.86
SCE-L9186ELJWSS	9.00	18.00	6.00	IS6	942.86	SCE-9P18L	8.00	17.00	26.63
SCE-L9188ELJWSS	9.00	18.00	8.00	IS6	999.43	SCE-9P18L	8.00	17.00	26.63
SCE-L9246ELJWSS	9.00	24.00	6.00	IS6	1,028.89	SCE-9P24L	8.00	23.00	29.14
SCE-L9248ELJWSS	9.00	24.00	8.00	IS6	1,090.62	SCE-9P24L	8.00	23.00	29.14
SCE-L9306ELJWSS	9.00	30.00	6.00	IS6	1,039.07	SCE-9P30L	8.00	29.00	31.92
SCE-L9308ELJWSS	9.00	30.00	8.00	IS6	1,101.41	SCE-9P30L	8.00	29.00	31.92
SCE-L9366ELJWSS	9.00	36.00	6.00	IS6	1,049.68	SCE-9P36L	8.00	35.00	34.97
SCE-L9368ELJWSS	9.00	36.00	8.00	IS6	1,112.66	SCE-9P36L	8.00	35.00	34.97

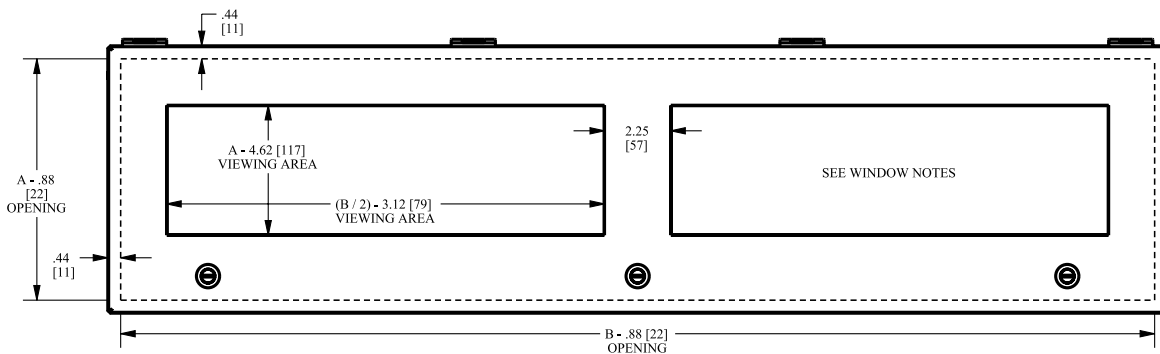
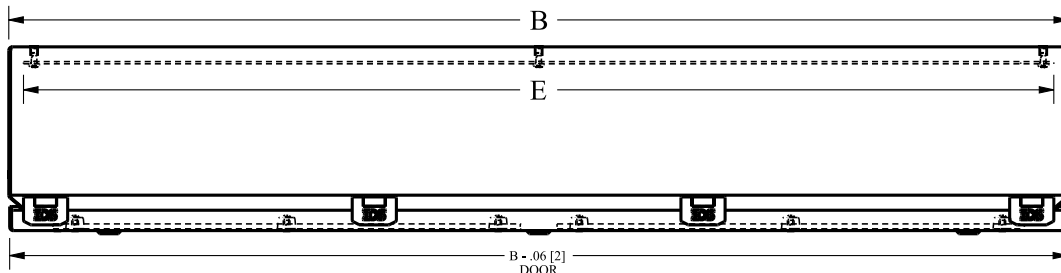


Phone (989) 799-6871
Fax (989) 799-4524



STAINLESS STEEL ENVIROLINE® SERIES TROUGH JUNCTION ENCLOSURES WITH VIEWING WINDOW

TECHNICAL DATA



LATCH NOTES:
 One latch centered on door horizontally if width is ≤ 14.00 [356]
 Two latches located 3.00 [76] from sides of door if width is > 14.00 [356]
 An Additional latch is centered horizontally if width is > 20.00 [508]

WINDOW NOTES:
 Door has a single window when viewing area width is ≤ 16.00 [406]
 Door has two windows if viewing area width would be > 16.00 for a single window.

