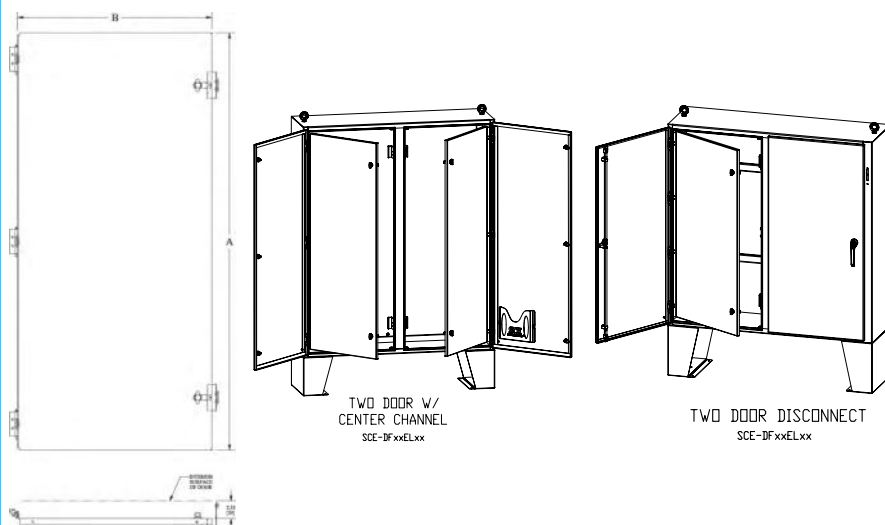
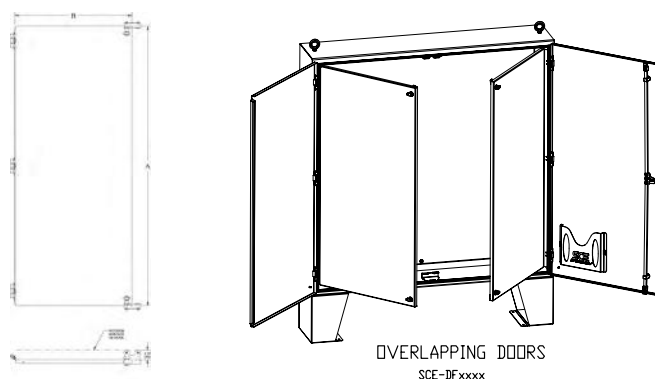


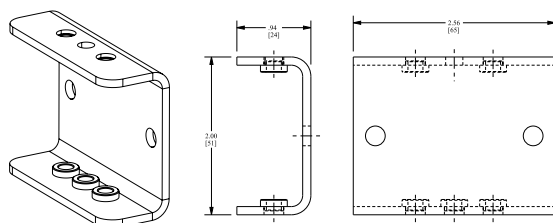
Catalog No.	Height	Width	Qty. Per Kit	Product Code	List Price
SCE-DF48EL48	44.00	19.88	1	P2	261.30
SCE-DF60EL48	60.00	20.00	1	P2	345.67
SCE-DF60EL60	56.00	25.88	1	P2	385.11
SCE-DF72EL60	68.00	25.88	1	P2	425.77
SCE-DF72EL72	68.00	31.88	1	P2	475.40



Catalog No.	Height	Width	Qty. Per Kit	Product Code	List Price
SCE-DF6048	56.00	22.13	1	P2	356.31
SCE-DF6060	55.50	28.13	1	P2	396.74
SCE-DF7260	67.50	28.13	1	P2	438.41
SCE-DF7272	68.00	34.13	1	P2	489.29



Catalog No.	Description	Product Code	List Price
SCE-115259	For use with Wall Mount Enclosures with SCE concealed hinges	P2	34.43



MOUNTING PANELS

Dead Front Panel For Two-Door Enclosures with Center Channel

Designed for installation into Envirolite® Series two-door enclosures with center channel, to be installed in the front of an enclosure and to swing out of the enclosure. Kit consists of heavy gauge brackets, hinges, and mounting hardware. Installed by detaching door hinge from enclosure and installing swing out panel kit to the existing holes. Hinge is supplied with the enclosure. Made of steel and powder coated white. Kit contains one panel and all hardware for one dead front behind one door.

Provided with UL Recognized sealing washer to maintain Environmental Rating of the enclosure.

Dead Front Panel For Two-Door Enclosures with Overlapping Doors

Designed for installation into two-door enclosures with overlapping doors, to be installed in the front of an enclosure and to swing out of the enclosure. Kit consists of heavy gauge brackets, hinges, and mounting hardware. Installed by detaching door hinge from enclosure and installing swing out panel kit to the existing holes. Hinge is supplied with the enclosure. Made of steel and powder coated white. Kit contains one panel and all hardware for one dead front behind one door.

Provided with UL Recognized sealing washer to maintain Environmental Rating of the enclosure.

Dead Front Extension Brackets for Wall Mount Enclosures

Designed to increase the distance from the door to the dead front. Brackets can be used when additional space is required when mounting parts to the dead front. Five brackets provided per kit.