

Selector switch actuators lever



LPC S1...

Order code	Type of positions	Qty per pkg n°	Wt [kg]
2 position (without mounting adapter).			
LPC S120		10	0.037
LPC S121		10	0.037
3 position (without mounting adapter).			
LPC S130		10	0.037
LPC S131		10	0.037
LPC S132		10	0.037
LPC S133		10	0.037

Selector switch actuators long lever



LPC S2...

Order code	Type of positions	Qty per pkg n°	Wt [kg]
2 position (without mounting adapter).			
LPC S220		10	0.040
LPC S221		10	0.040
3 position (without mounting adapter).			
LPC S230		10	0.040
LPC S231		10	0.040
LPC S232		10	0.040
LPC S233		10	0.040

Selector switch actuators key



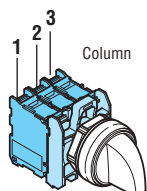
LPC S3...

Order code	Type of positions	Qty per pkg n°	Wt [kg]
2 position (without mounting adapter).			
LPC S320		10	0.060
LPC S320R①		1	0.060
LPC S321		10	0.060
LPC S321R①		1	0.060
LPC S340		10	0.060
LPC S340R①		1	0.060
3 position (without mounting adapter).			
LPC S330		10	0.060
LPC S330R①		1	0.060
LPC S331		10	0.060
LPC S331R①		1	0.060
LPC S332②		10	0.060
LPC S332R①②		1	0.060
LPC S333②		10	0.060
LPC S333R①②		1	0.060
LPC S350		10	0.060
LPC S350R①		1	0.060
LPC S360		10	0.060
LPC S360R①		1	0.060
LPC S370②		10	0.060
LPC S370R①②		1	0.060
LPC S380②		10	0.060
LPC S380R①②		1	0.060
LPC S390②		10	0.060
LPC S390R①②		1	0.060

① Versions with different key codes.
Complete with the numeric code of the key.
The following versions are available: 421E, 458A, 520E, 3131A, 3433E.
Example of complete code: LPC S320 R421E.

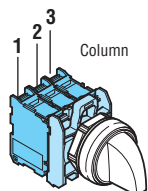
② Available only on specific request

Contact activation of 2-position selector switch



		Contacts		
		1	2	3
A		—	—	—
B		•	•	•

Contact activation of 3-position selector switch



		Contacts		
		1	2	3
A		•	•	—
B		—	—	—
C		—	•	•

Operational characteristics

- Any mounting position allowed
- Standard key types supplied with key code n° 455
- Ambient conditions:
 - Operating temperature: -25...+70°C
 - Storage temperature: -40...+85°C
- Degree of protection:
 - Per IEC/EN: IP66, IP67 and IP69K
 - Per UL: Type 1, 2, 3R, 4, 4X, 12, 12K.

Materials

Polyamide.

Mechanical endurance

Mechanical life: 1,000,000 cycles.

Mounting adapter

See page 7-20.

Type: LPX AU120.

Actuators are installed through a Ø22mm/Ø0.87" drilling with a threaded fixing ring (Tmax = 2.3Nm/1.69lbf) also on the cover of LPZ control stations.

The mounting adapter directly snaps onto the actuator.

Contact elements

See page 7-20, 7-23 or 7-24.

Type	Termination	
1NO	LPX C10	Screw
	LPX CF10	Faston
	LPXCS10	Spring clamp
1EM	LPX C10A	Screw
1NC	LPX C01	Screw
	LPX CF01	Faston
	LPX CS01	Spring clamp
1LB	LPX C01D	Screw

Base-mount types snap into LPZ control station base.

See example on page 7-27.

Up to 3 contacts can be fitted per control station actuator.

1NO	LPX CB10	Screw
1NC	LPX CB01	Screw

Activation of the middle contacts is coupled to the side contacts; the relative mechanism pins are standard supplied.



The middle contact activation, with respect to the right and left side contact, can be changed by the user, if required, by removing one or both mechanism pins. Consult the relative instructions available online in the Downloads section at www.LovatoElectric.com.

Type of position

- Maintained position.
- Spring return position.
- Key extraction position.

Rotation angles

2 position



3 position



Special versions

Versions with coloured keys are available upon request.

Consult Technical support; see contact details on inside front cover.

Certifications and compliance

Certifications obtained: UL Listed for USA and Canada, (cULus - File E93601), as Auxiliary Devices; EAC, CCC, RINA. Compliant with standards: IEC/EN 60947-1, IEC/EN 60947-5-1, UL508, CSA C22.2 n° 14.

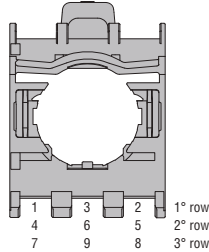
Mounting adapter



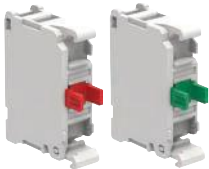
LPX AU120

Order code	Description	Qty per pkg	Wt
		n°	[kg]
LPX AU120	Mounting adapter	10	0.019

Rear view
(reference for element installation)



Contact elements



LPX C...



LPX C01SM

LPX C02SM



LPX E...



LPX CF01

LPX CF10

Order code	Function	Qty per pkg	Wt
		n°	[kg]

Screw termination.
Without mounting adapter.

LPX C10Ⓢ		10	0.011
LPX C10A		10	0.011
LPX C01⊖		10	0.011
LPX C01DⓈ⊖		10	0.011

Screw termination. Without mounting adapter.
Auto-monitor contact elements for non-illuminated latch mushroom-head pushbuttons.

LPX C01SMⓈ⊖		1	0.022
LPX C02SMⓈ⊖		1	0.033

Screw termination.
With mounting adapter.

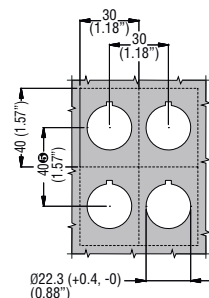
LPX E10Ⓢ		10	0.029
LPX E01⊖		10	0.029

Faston termination.
Without mounting adapter.

LPX CF10Ⓢ		10	0.012
LPX CF01⊖		10	0.012

- ① Use LPX C10A (EM) or LPX C01 (NC) type only with push-push actuators.
Not suitable for push-push actuators.
- ② Normally open contact with early-make operation and suitable for push-push actuators.
- ③ Direct (positive) opening action ⊖ in accordance with IEC/EN 60947-5-1.
- ④ Normally closed contact with late break operation.

Drillings - Minimum recommended distances



- ⑤ When using Faston, pitch is 85mm/3.35" minimum.

Operational characteristics

- Any mounting position allowed.
- All LPX C... types snap onto LPX AU120 mounting adapter:
 - See the combinations given under "Contact elements" in the right-hand column for each type of pushbutton and selector switch.
 - A maximum of 3 contacts or 2 contacts and 1 LED element (LPX L... mounted in the middle position) can be fixed internally on the cover surface of LPZ control stations.
- A maximum of 2 LPX C...SM contacts can be installed on LPX AU120 adapter exclusively on non-illuminated mushroom-head latch actuators:
 - In pos. 1-3 (on the left side only of LPX AU120; refer to REAR VIEW drawing), one only LPX C01SM or LPX C02SM element can be fitted.
 - One extra LPX...SM can be installed in pos. 4-6 (stacked behind the LPX...SM on the LPX AU120)
 - With LPX C01SM, a maximum of two contacts LPX C0... or LPX C1... can be fitted on the right side in LPX AU120 pos. 2 and 5, one behind the other.
 - On the internal surface of LPZ control station covers, one only LPX C01SM or LPX C02SM contact can be mounted on LPX AU120 pos. 1 (on the left).
With LPX C01SM, one extra element LPX C0... or LPX C1... can be fitted on the right (LPX AU120 pos. 2).
 - No LED element can be used with LPX C...SM types.
- Maximum tightening torque for screw terminals:
1Nm/0.74lbf
- Ambient conditions:
 - Operating temperature: -25...+70°C
 - Storage temperature: -40...+85°C
- Degree of protection:
 - IP20 for screw termination
 - IP00 for Faston termination.

General characteristics of contact elements

Wiping effect, dual scraping-oscillating action
IEC rated insulation voltage: 690V
IEC rated thermal current Ith: 10A
Conductivity: 5V 1mA
UL/CSA and IEC/EN 60947-5-1 designation: A600 Q600.

IEC/EN operational characteristics in AC15 category:

[V]	12	24	48	120	240	400	480	500	600
[A]	6	6	6	6	6	3	1.5	1.4	1.2

IEC/EN operational characteristics in DC13 category:

[V]	12	24	48	125	250	440	500	600
[A]	3	3	1.5	0.55	0.27	0.15	0.13	0.1

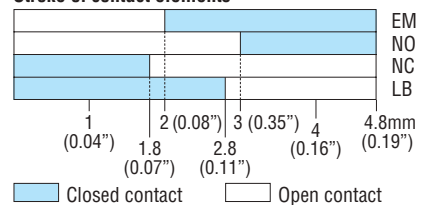
Short-circuit protection fuse: max calibre: 10A gG/SC.

Contact resistance: ≤20mΩ.

Terminals: Clamp screw with washer.

Faston 1x6.35mm(0.25") or 2x2.8mm(0.11").

Stroke of contact elements



Maximum conductor cross section for screw terminals
1 or 2 2.5mm² or AWG14 cables.

Mechanical and electrical endurance

Operating force: ≤0.5kg/1.1lb (auxiliary contacts).
Electrical life: 1,000,000 cycles for LPXC10/01/E10/01, LPX C01SM/02SM, LPXCF10/01; 600,000 cycles for LPXC10A/01D.

Certifications and compliance

Certifications obtained: UL Listed for USA and Canada, (cULus - File E93601), as Auxiliary Devices; EAC, CCC, RINA.

Compliant with standard: IEC/EN 60947-1, IEC/EN 60947-5-1, UL508, CSA C22.2 n° 14.