

3 Type

- A** Mounting from the back (tapped blind hole)
- B** Mounting from the operator's side

Metric table

Dimensions in: millimeters - inches

1 d_1	2 $l_1 \pm 0.5$	b	d_2 Thread	$h \approx$	l_2	l_3	l_4	t min.
28 1.10	200 7.87	32 1.26	M 8	60 2.36	220 8.66	180 7.09	20 .79	15 .59
28 1.10	250 9.84	32 1.26	M 8	60 2.36	270 10.63	230 9.06	20 .79	15 .59
28 1.10	300 11.81	32 1.26	M 8	60 2.36	320 12.60	280 11.02	20 .79	15 .59
28 1.10	400 15.75	32 1.26	M 8	60 2.36	420 16.54	380 14.96	20 .79	15 .59
28 1.10	500 19.69	32 1.26	M 8	60 2.36	520 20.47	480 18.90	20 .79	15 .59
28 1.10	600 23.62	32 1.26	M 8	60 2.36	620 24.41	580 22.83	20 .79	15 .59

Specification



- Tube / handle legs
Aluminum
 - Powder coated
 - Black, RAL 9005, textured finish
 - Anodized finish, natural color

- **SW**
- **EL**

- Covers
Plastic
Technopolymer (Polyamide PA)
Black, matte finish

- Socket cap screws DIN 912-M8x75
Hexagon nuts ISO 4032-M8
Washers DIN 125
Steel, zinc plated

- RoHS compliant

Information

GN 669 system handles offer the advantage of high stability when the use of long handles is required. Handles can also be supplied as hand railings.

For very long lengths between mounting points, a special stability mounting leg with identical securing methods and plastic covers can be supplied for certain minimum quantities.

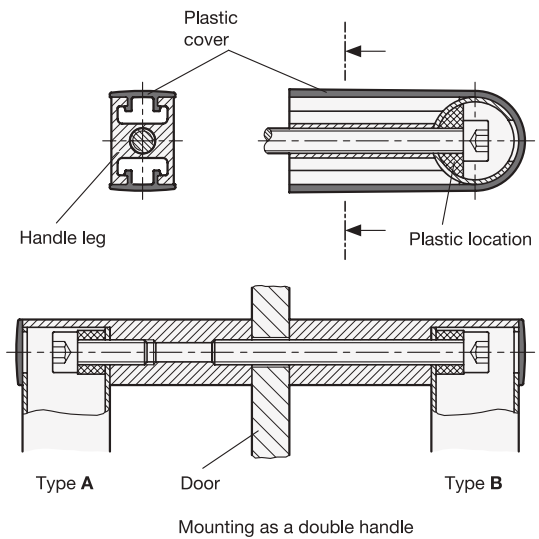
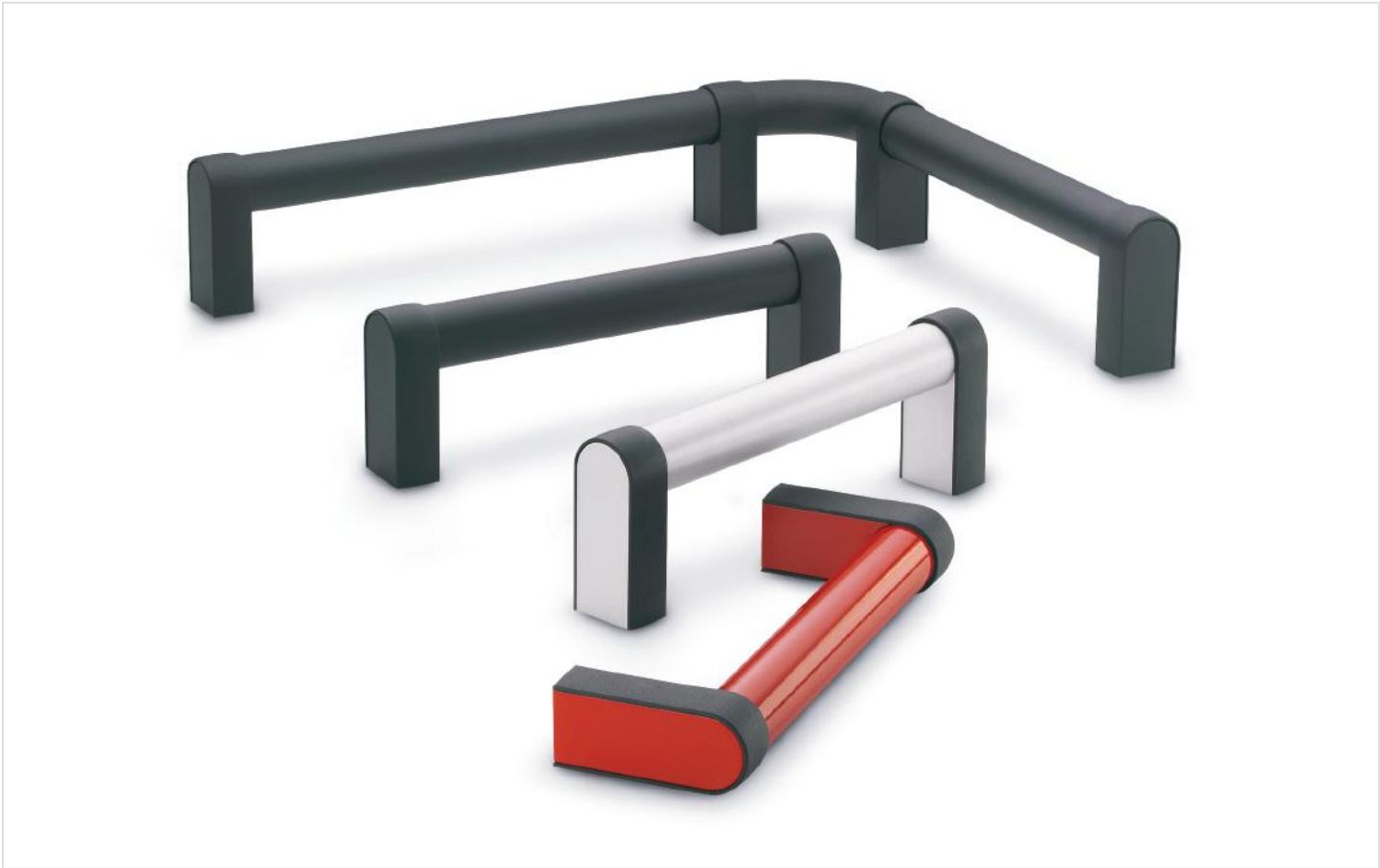
see also...

- Tubular Handles GN 333.1

On request

- Various metric size fasteners and kit packaging

How to order GN 669-28-400-A-EL	1 Handle diameter d_1
	2 Length l_1
	3 Type
	4 Finish



Mounting information

When mounting from the operator's side (type B) the plastic covers are supplied loose. Once the handle has been mounted the covers are pushed over the end of the handle tube and the foot until they snap into the end of the groove at the tube end.

Both mounting methods (type A and B) allow the mounting of a pair of handles in the opposite position. This method could be used on doors (double handle). Depending on the door thickness longer socket head screws DIN 912 might be required.

1.1
1.2
1.3
1.4
2.1
2.2
2.3
2.4

