



*Quality Products. Service Excellence.*

## Two Post Mounting Adjustable Shelf *DNRMA Series*

275 lbs (125 kg) Weight Capacity

### Features



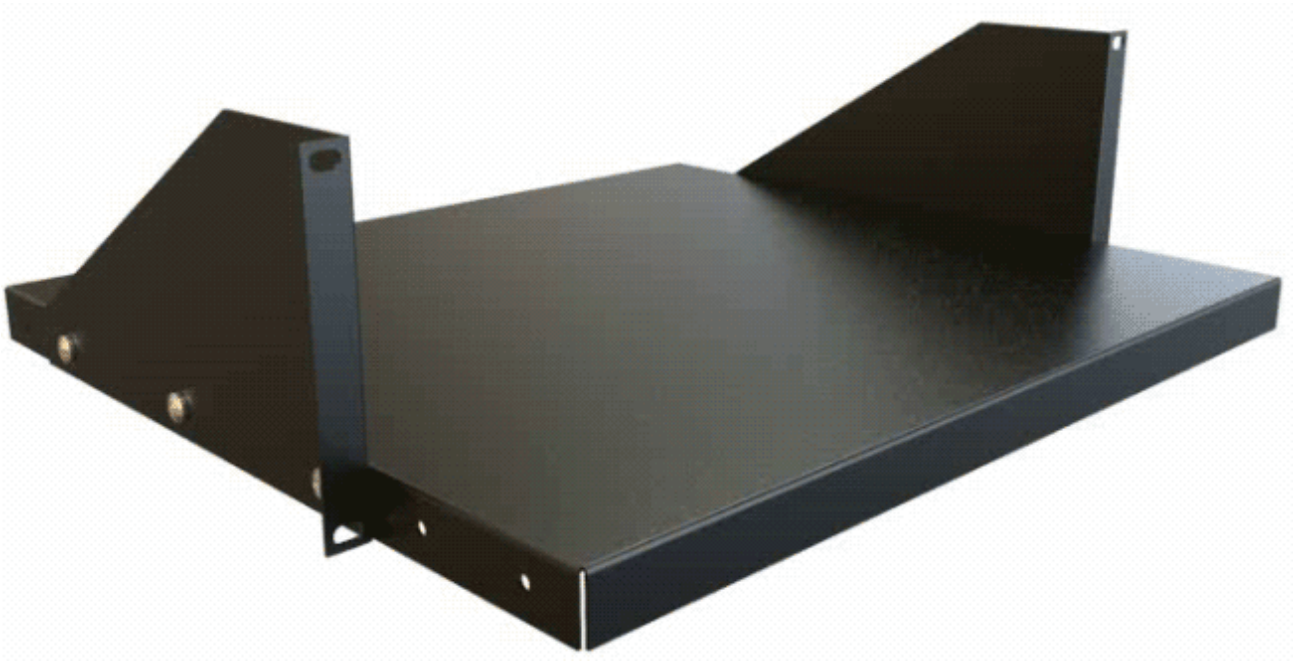
- 14-Gauge steel construction.
- Movable side brackets allow mounting inside or outside rack at 4 different depths
- Designed mainly for open relay racks - works panel mounted on any rack
- Choice of 16-inch or 20-inch deep.
- Available in either 19-inch rack panel width
- Knockdown design ships unassembled for easy handling and shipping protection.
- 275 lbs (125 kg) **load rating**.
- Finished in rugged textured RAL9005 black powder coat. Complies with the Greenguard guidelines for indoor air quality.
- TAA-compliant for GSA Schedule purchases.
- RoHS and REACH compliant.
- Manufactured in North America.



### Accessories

- Mounting Hardware





Part No.	Mounting Width	Overall Depth	Rack Units	Mounting Height
DNRMA1916BK1	19.00	16.00	3U	5.25
DNRMA1920BK1	19.00	20.00	3U	5.25

*Data subject to change without notice*

© 2023. Hammond Manufacturing Ltd. All rights reserved.