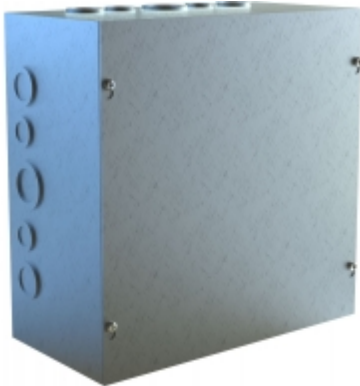




Quality Products. Service Excellence.

# Type 1 Unpainted Galvanized Steel Junction Box *CSKOG Series*

Screw Cover and w/ Knockouts



## Application

- Designed for general purpose indoor commercial use as a junction, pull or switch box.

## Standards

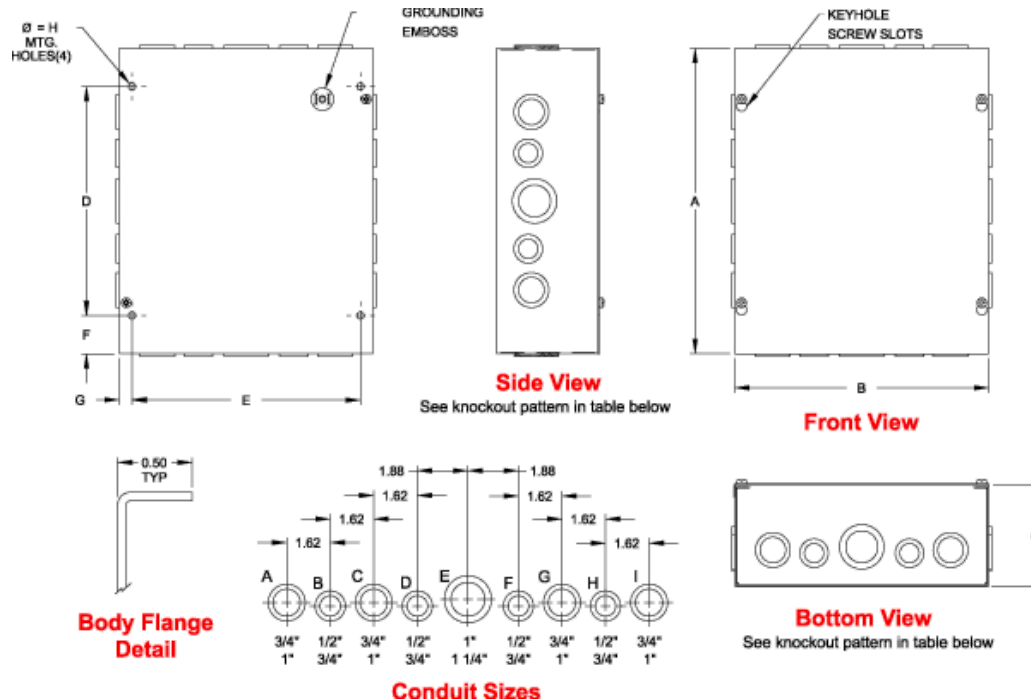
- UL-50 Type 1
- CSA Type 1
- Complies with:
  - NEMA Type 1
  - IEC 60529, IP20

## Construction

- Formed and spot welded from 16 or 14 gauge G90 galvanized steel depending on size.
- Flat steel covers fastened with plated steel screws.
- Keyhole slots permit cover to be lifted off without removing screws entirely.
- Easily removed knockouts on all 4 sides (see drawings for sizes and locations).
- Through holes in back for wall mounting.
- Grounding location embossed in body.

## Finish

- Enclosure and cover are unpainted galvanized steel.



Part No.	Overall Dimensions	Mtg. Centers	Knockout Pattern	H	Knockout Pattern
----------	--------------------	--------------	------------------	---	------------------

Part No.	Overall Dimensions			Mfg. Centers			F	G	Knockouts	Side Pattern	H	Top & Bottom Pattern
	A	B	C	D	E	F						
CSKOG664	6.00	6.00	4.00	3.00	5.00	1.50	0.50			B-C-D	0.28	B-C-D
CSKOG884	8.00	8.00	4.00	5.00	7.00	1.50	0.50			F-G-H-I	0.28	F-G-H-I
CSKOG10104	10.00	10.00	4.00	7.00	9.00	1.50	0.50			F-G-H-I	0.28	C-D-E-F-G
CSKOG12124	12.00	12.00	4.00	9.00	11.00	1.50	0.50			C-D-E-F-G	0.28	C-D-E-F-G
CSKOG666	6.00	6.00	6.00	3.00	5.00	1.50	0.50			B-C-D	0.28	B-C-D
CSKOG886	8.00	8.00	6.00	5.00	7.00	1.50	0.50			F-G-H-I	0.28	F-G-H-I
CSKOG10106	10.00	10.00	6.00	7.00	9.00	1.50	0.50			F-G-H-I	0.28	C-D-E-F-G
CSKOG12126	12.00	12.00	6.00	9.00	11.00	1.50	0.50			C-D-E-F-G	0.28	C-D-E-F-G
CSKOG12128	12.00	12.00	8.00	9.00	11.00	1.50	0.50			C-D-E-F-G	0.28	C-D-E-F-G

Data subject to change without notice

© 2018. Hammond Manufacturing Ltd. All rights reserved.