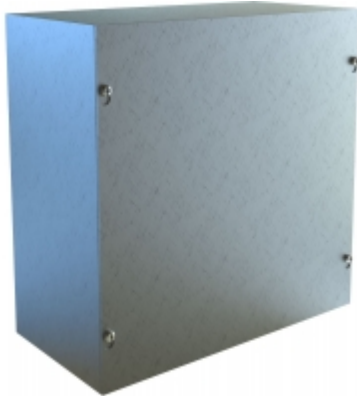




Quality Products. Service Excellence.

Type 1 Unpainted Galvanized Steel Junction Box *CSG Series*

Screw Cover and without Knockouts



Application

- Designed for general purpose indoor commercial use as a junction, pull or switch box.

Standards

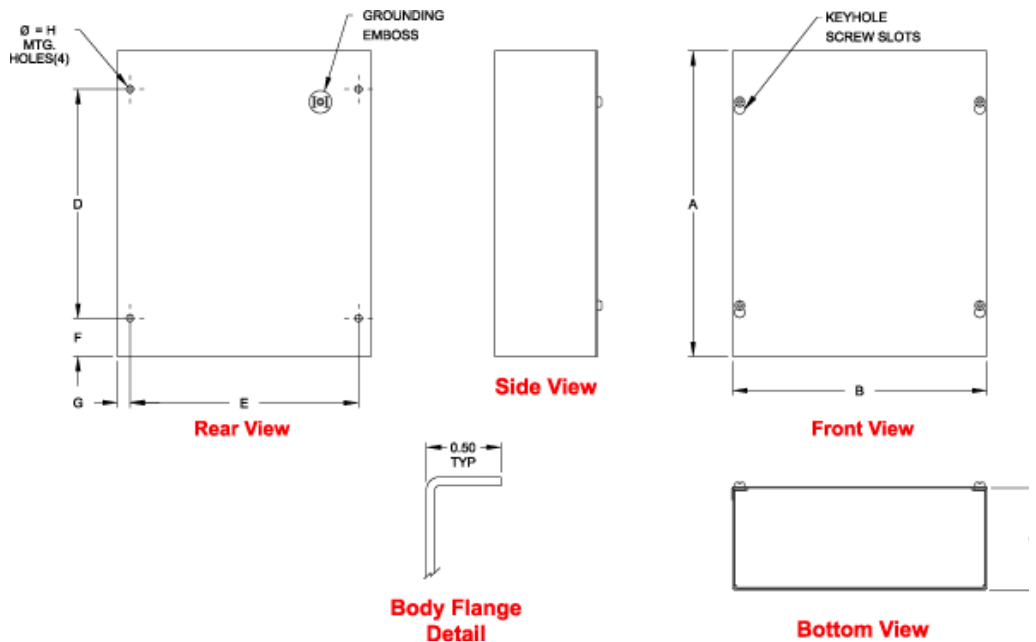
- UL-50 Type 1
- CSA Type 1
- Complies with
 - NEMA Type 1
 - IEC 60529, IP20

Construction

- Formed and spot welded from 16 or 14 gauge G90 galvanized steel depending on size.
- Flat steel covers fastened with plated steel screws.
- Keyhole slots permit cover to be lifted off without removing screws entirely.
- Through holes in back for wall mounting.
- Grounding location embossed in body.

Finish

- Enclosure and cover are unpainted galvanized steel.



Part No.	Overall Dimensions			Mtg. Centers				
	A	B	C	D	E	F	G	H
CSG664	6.00	6.00	4.00	3.00	5.00	1.50	0.50	0.28
CSG884	8.00	8.00	4.00	5.00	7.00	1.50	0.50	0.28

Part No.	Overall Dimensions			Mtg. Centers				
	A	B	C	D	E	F	G	H
CSG10104	10.00	10.00	4.00	7.00	9.00	1.50	0.50	0.28
CSG12124	12.00	12.00	4.00	9.00	11.00	1.50	0.50	0.28
CSG666	6.00	6.00	6.00	3.00	5.00	1.50	0.50	0.28
CSG886	8.00	8.00	6.00	5.00	7.00	1.50	0.50	0.28
CSG10106	10.00	10.00	6.00	7.00	9.00	1.50	0.50	0.28
CSG12106	12.00	10.00	6.00	9.00	9.00	1.50	0.50	0.28
CSG12126	12.00	12.00	6.00	9.00	11.00	1.50	0.50	0.28
CSG18126	18.00	12.00	6.00	15.00	11.00	1.50	0.50	0.28
CSG18186	18.00	18.00	6.00	15.00	17.00	1.50	0.50	0.28
CSG24246	24.00	24.00	6.00	21.00	22.50	1.50	0.75	0.44
CSG12128	12.00	12.00	8.00	9.00	11.00	1.50	0.50	0.28
CSG18188	18.00	18.00	8.00	15.00	17.00	1.50	0.50	0.28
CSG24248	24.00	24.00	8.00	21.00	22.50	1.50	0.75	0.44

Data subject to change without notice

© 2018. Hammond Manufacturing Ltd. All rights reserved.