

TECHNICAL DATA

# Fluke DS701 and DS703 FC High Resolution Diagnostic Videoscopes



## SUPERIOR IMAGE QUALITY

### HIGH RESOLUTION

#### DS701

800 x 600 (480,000 pixels)

#### DS703 FC High Resolution

1200 x 720 (864,000 pixels)

### DIAGNOSTIC VIDEOSCOPE

Dual view camera

Adjustable light

Auto zoom



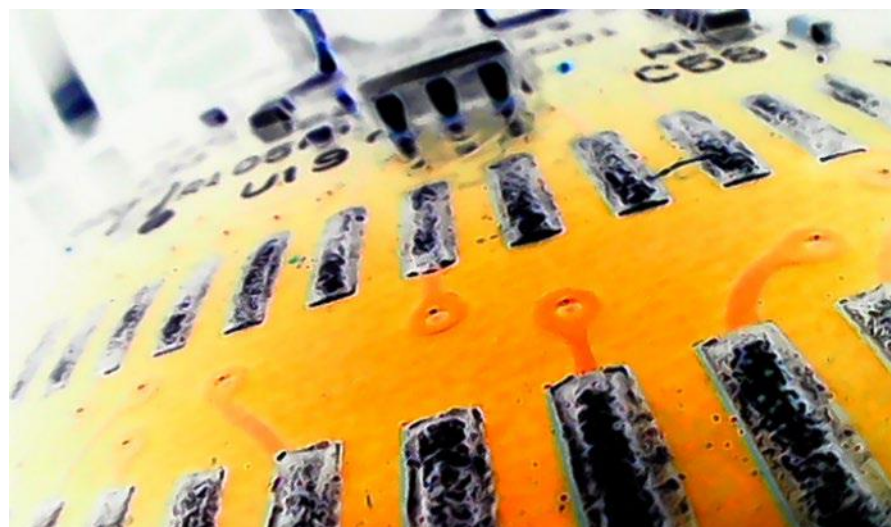
Fluke Connect™ compatible

## Gritty, industrial, expensive equipment? Diagnose before tear-down with the durability of Fluke

The benefits of a videoscope are well known. But Industrial inspections require a powerful diagnostic videoscope designed to stand up to the dirtiest, most harsh environments.

Fluke Diagnostic Videoscopes put high-resolution images in the palm of your hand.

- High definition probe with dual-view camera
- Processing speeds that render a smooth, clear, consistent image
- 7" LCD screen for easy viewing
- Macro to micro zoom function
- Adjustable lighting to capture the best image
- True 720p video



## Detailed specifications

	DS701	DS703 FC
<b>Videoscope probe</b>		
Length	1.2 meter (3.94 feet)	
Type	Detachable, semi-rigid, waterproof, immersible to 1 meter or more in depth	
Diameter	8.5 mm (0.33 inches), optional 3.8, 5.5 and 9 mm probes available	
Material	Elastomer coated steel	
Lighting	Adjustable LED, one front, one side	
Illumination	53 Lux	
UpisUp™ technology	Appropriate image display, regardless of the orientation of the probe, 8.5 MM, 1.2 M probe only	
<b>Camera</b>		
	Dual view camera, forward and side	
Resolution	800 x 600 (480,000 pixels)	1200 x 720 (864,000 pixels)
Still image format	JPG	
Video recording format	AVI	
Video output format	MPEG compression	
Digital zoom	Adjustable from 1x to 8x zoom	
Field of view	68°	
Depth of field	25 mm to infinity	
Video resolution	Standard	720p
Minimum focus distance	10 mm	
Focus type	Fixed	
Rotation	180°	
Streaming video	Via HDMI and Fluke Connect™	
<b>LCD screen</b>		
Touch screen	Capacitive touch screen	
Size	7 inch (17.79 cm)	
Refresh rate	30 hz	
UpisUp™ technology	Real-time upright adjustment for image	
LED backlight	Adjust display brightness for optimal viewing	
<b>Communication</b>		
Wireless interface		WiFi 802.11b/g/n, Range: 33 feet (10.06 meters)
Data transfer	USB	USB and micro HDMI cable
Fluke Connect™*		Save and share images directly from the diagnostic scope. Attach images or video to an asset record or work order.
Instant upload to the cloud		Yes, with Fluke Connect™
<b>General features</b>		
Color palettes	Visible light, grayscale or inverted	
Internal memory	6 GB	
Physical buttons	Intuitive, easy to navigate button technology, 4 functional keys, 4 navigational, one capture or select button	
Carrying case	Protective EVA case	
Strap	Hand strap	Hand strap and neck strap
Power adapter	AC adapter/battery charger input	
Battery	6400mAh 3.7 volt rechargeable internal li-ion battery	
Battery life	3 hours at 50 % LED brightness	
Dimensions	6.98 x 8.85 inches (17.73 x 22.48 cm)	
Weight	1.95 lbs (0.88 Kg)	
<b>IP rating</b>		
Tablet	IP54, dust protected and protected against water projected from a nozzle	
Probe	IP68, dust tight and immersion of 1 meter or more depth	
<b>Drop test</b>	2 meter (6.56 feet)	
<b>Operating temperature</b>	0 °C to 45 °C (32 °F to 104 °F), 50 °C (113 °F) for less than 10 minutes	
<b>Storage temperature</b>	-40 °C to 60 °C (-40 °F to 140 °F)	
<b>Operating humidity</b>	90 % at 35 °C (95 °F) 75 % at 40 °C (104 °F) 45 % at 50 °C (122 °F)	
<b>Warranty</b>	2 years	

\*Fluke Connect™ app and Fluke Connect™ products not available in all countries.

Fluke Connect™ functionality will be available for the DS703 FS Videoscope soon. This powerful software will allow you to save and share high-resolution images with your team. Watch the Fluke website for this firmware update and add the power of Fluke Connect to your DS703 FC Videoscope.



**Preventive maintenance simplified. Rework eliminated.**

Save time and improve the reliability of your maintenance data by wirelessly syncing measurements using the Fluke Connect™ system.

- Eliminate data-entry errors by saving measurements directly from the tool and associating them with the work order, report or asset record
- Maximize uptime and make confident maintenance decisions with data you can trust and trace.
- Access baseline, historical and current measurements by asset

The Fluke DS703 FC is part of a growing system of connected test tools and equipment maintenance software.

**Visit [www.flukeconnect.com](http://www.flukeconnect.com) to learn more about the Fluke Connect™ system.**



**Ordering information**

**FLK-DS701** Diagnostic Videoscope  
**FLK-DS703 FC** High Resolution Diagnostic Videoscope

**What's included**

Diagnostic videoscope with 1.2m, 8.5mm semi-rigid probe, hand strap (DS703 FC includes hand and neck strap), USB cable, AC power supply/battery charger, TPAK magnetic hanger, protective EVA case

**Optional accessories**

- FLK-3.8MM Scope** 1M probe, forward view
- FLK-8.5MM Scope** 3M probe, dual view
- FLK-5.5MM Scope** 1M probe, dual view
- FLK-8.5MM Scope** 1.2M probe, dual view
- FLK-8.5MM UV Scope** 1M probe, dual view
- Fluke FLK-9MM Scope** forward view, 20m probe reel
- Fluke DS 7XX Neckstrap**

Visit your local Fluke website or contact your local Fluke representative for more information.



All trademarks are the property of their respective owners. WiFi or cellular service required to share data. Smartphone, wireless service and data plan not included with purchase. First 5 GB of storage is free. Phone support details can be viewed at [fluke.com/phones](http://fluke.com/phones).

**Smart phone wireless service and data plan not included with purchase. Fluke Connect is not available in all countries.**

**Fluke.** *Keeping your world up and running.*

**Fluke Corporation**  
 PO Box 9090, Everett, WA 98206 U.S.A.  
**Fluke Europe B.V.**  
 PO Box 1186, 5602 BD Eindhoven, The Netherlands

Modification of this document is not permitted without written permission from Fluke Corporation.

**For more information call:**  
 In the U.S.A. (800) 443-5853 or Fax (425) 446-5116  
 In Europe/M-East/Africa +31 (0)40 267 5100 or Fax +31 (0)40 267 5222  
 In Canada (800)-36-FLUKE or Fax (905) 890-6866  
 From other countries +1 (425) 446-5500 or Fax +1 (425) 446-5116  
 Web access: <http://www.fluke.com>

©2018 Fluke Corporation. Specifications subject to change without notice. 8/2018 6010402h-en