

PART NAME SERIES 2000 UPRIGHT CABINET RACK

PART No.

E-2000 TO E-2015

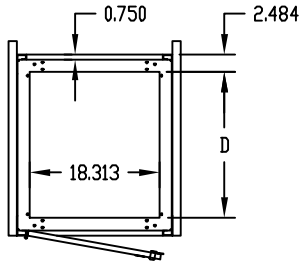
REV. DATE 1-2-02

**FINISH:**

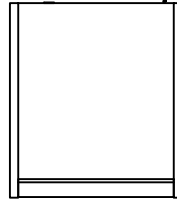
FRAME ASSEMBLY, SIDES,  
DOOR & TOP COVER \_\_\_\_\_ GRAY TEXTURE OR  
ROYAL BLUE TEXTURE  
PANEL MOUNTING RAILS \_\_\_\_\_ SMOOTH BLACK  
FRONT TOP TRIM \_\_\_\_\_ METALLIC GRAY

**MATERIAL:**

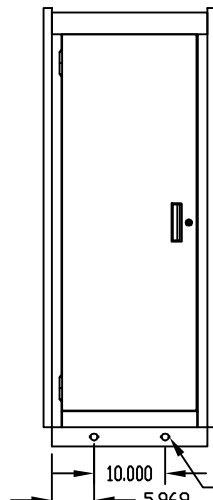
PANEL MOUNTING RAILS \_\_\_\_\_ 12 GA. STEEL  
FRAME TOP, BASE ASSEMBLY,  
FILLERS & VERTICAL RAILS \_\_\_\_\_ 14 GA. STEEL  
RAIL SUPPORTS \_\_\_\_\_ 16 GA. STEEL  
TOP COVER & SIDES \_\_\_\_\_ 18 GA. STEEL  
DOOR & FRONT TOP TRIM \_\_\_\_\_ 20 GA. STEEL



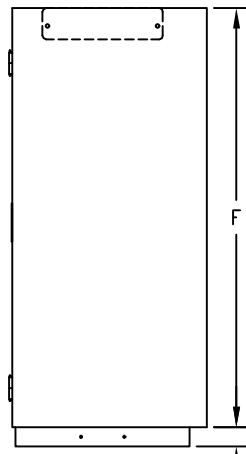
TOP VIEW  
(LESS TOP COVER  
& FRONT TOP TRIM)



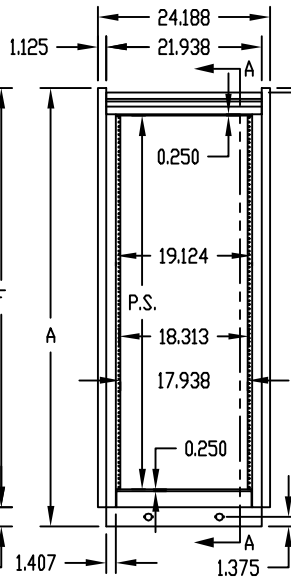
TOP VIEW



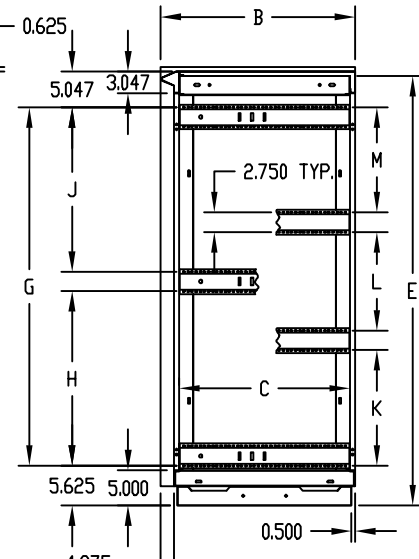
REAR VIEW



LEFT SIDE VIEW



FRONT VIEW

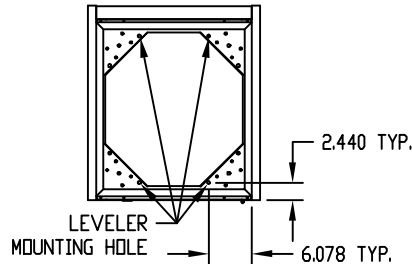


SECTION 'A-A'  
(LESS PANEL MTG. RAILS)

PANEL MOUNTING RAILS (FRONT & REAR)  
ARE TAPPED #10-32 DN E.I.A. UNIVERSAL  
SPACING AND ARE FULLY ADJUSTABLE.

BOTTOM PIERCED FOR MOUNTING RC-7758 CASTERS.

LOAD RATING: 1200 LBS. MAX.



BOTTOM VIEW

\* DISCONTINUED

PART No.	P.S.	A	B	C	D	E	F	G	H	J	K	L	M
E-2000	21.000	30.250	23.875	20.500	17.000	29.000	27.500	18.937	—	—	—	—	—
* E-2001	31.500	40.750	—	—	—	39.500	38.000	29.437	—	—	—	—	—
* E-2002	35.000	44.250	—	—	—	43.000	41.500	32.937	—	—	—	—	—
E-2003	42.000	51.250	—	—	—	50.000	48.500	—	19.281	17.906	—	—	—
E-2004	52.500	61.750	—	—	—	60.500	59.000	—	24.531	23.156	—	—	—
E-2005	61.250	70.500	—	—	—	69.250	67.750	—	28.906	27.531	—	—	—
E-2006	70.000	79.250	—	—	—	78.000	76.500	—	33.281	31.906	—	—	—
E-2007	78.750	88.000	23.875	20.500	17.000	86.750	85.250	—	—	—	25.125	22.312	23.750
E-2008	21.000	30.250	27.375	24.000	20.500	29.000	27.500	18.937	—	—	—	—	—
* E-2009	31.500	40.750	—	—	—	39.500	38.000	29.437	—	—	—	—	—
* E-2010	35.000	44.250	—	—	—	43.000	41.500	32.937	—	—	—	—	—
E-2011	42.000	51.250	—	—	—	50.000	48.500	—	19.281	17.906	—	—	—
E-2012	52.500	61.750	—	—	—	60.500	59.000	—	24.531	23.156	—	—	—
E-2013	61.250	70.500	—	—	—	69.250	67.750	—	28.906	27.531	—	—	—
E-2014	70.000	79.250	—	—	—	78.000	76.500	—	33.281	31.906	—	—	—
E-2015	78.750	88.000	27.375	24.000	20.500	86.750	85.250	—	—	—	25.125	22.312	23.750