

Altelix Audio/Video Enclosures

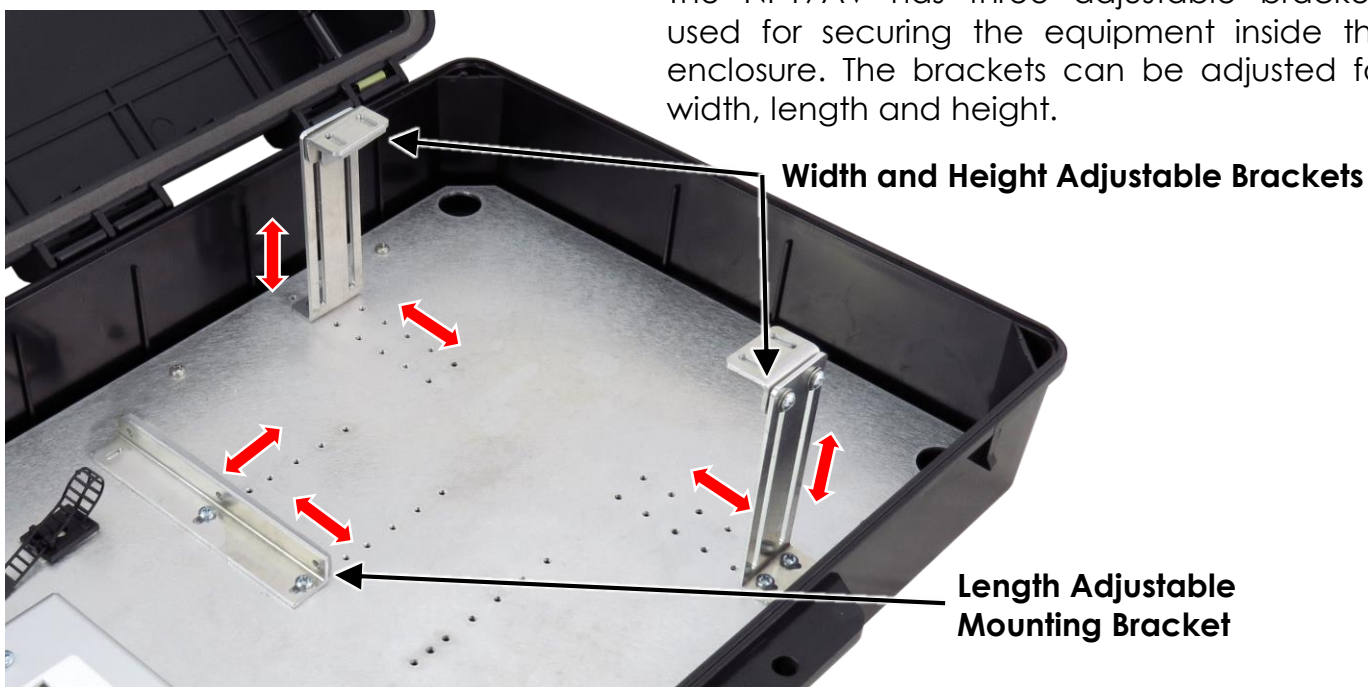


Installation Guide

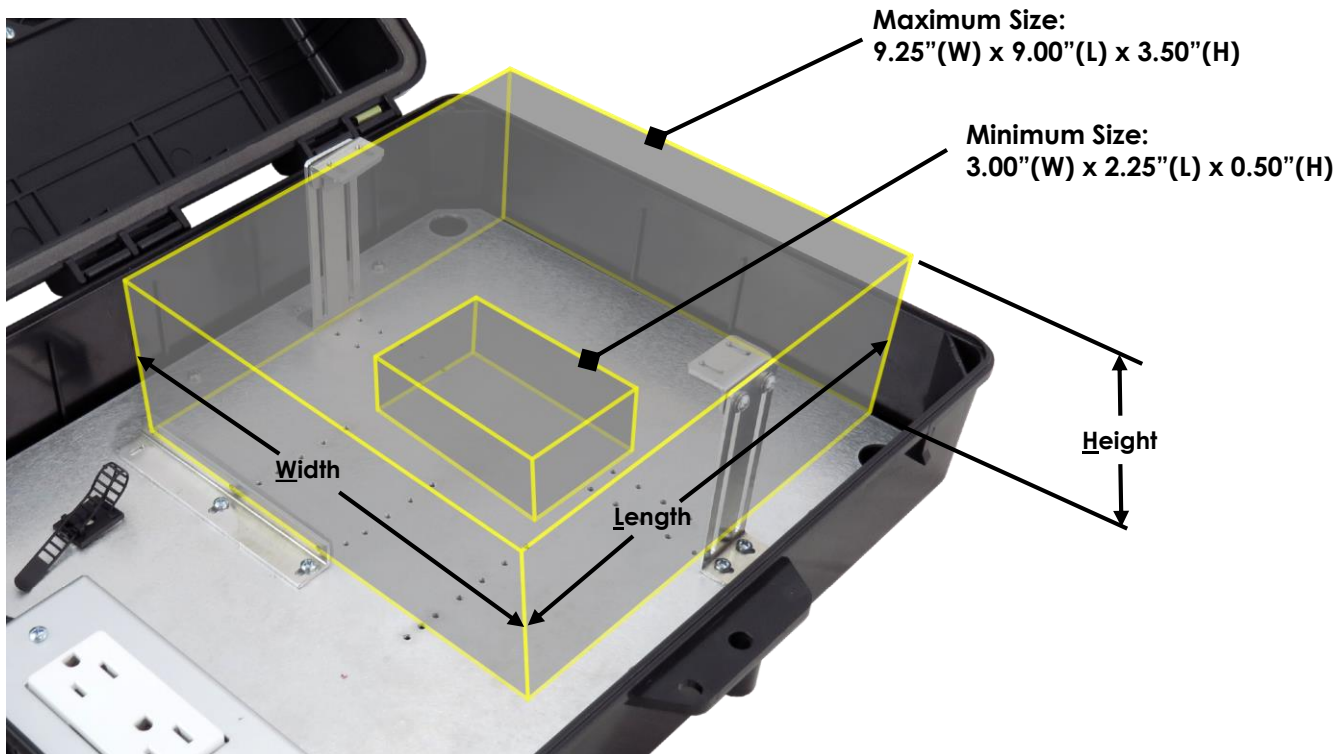


Installing a Device in the NP17AV

The NP17AV has three adjustable brackets used for securing the equipment inside the enclosure. The brackets can be adjusted for width, length and height.



The following illustration shows the minimum and maximum size devices that can be installed inside the enclosure.



Altelix LLC USA: 866-660-WIFI (9434) International: +1 561-660-9434 sales@altelix.com www.altelix.com

Copyright (C) 2017 Altelix LLC. All rights reserved. Altelix and the Altelix logo are Trademarks and/or Registered Trademarks of Altelix LLC.

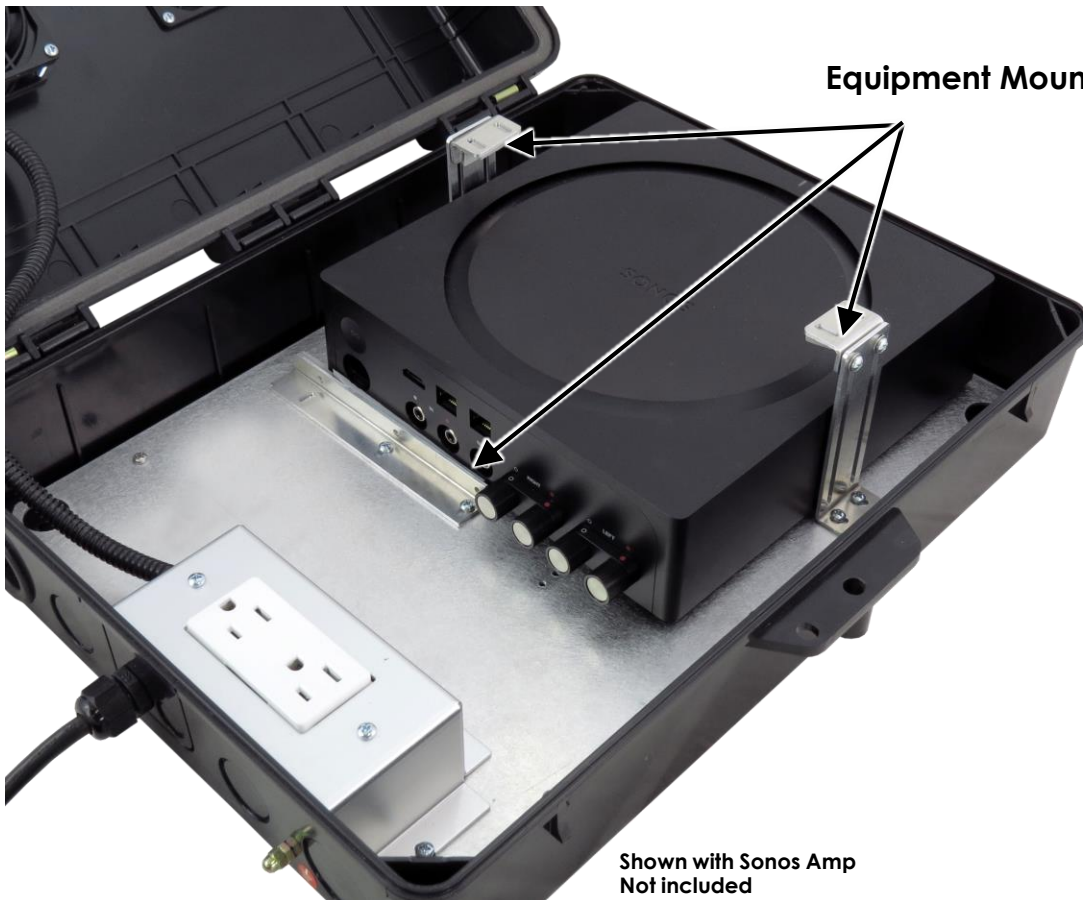
Specifications are subject to change without notice. See www.altelix.com for most current information



The equipment mounting bracket kit included with the NP17AV contains (3) brackets for securing the device into the enclosure. The (7) screws included in the kit are used to attached the brackets to the back plate.

Mounting Bracket Kit

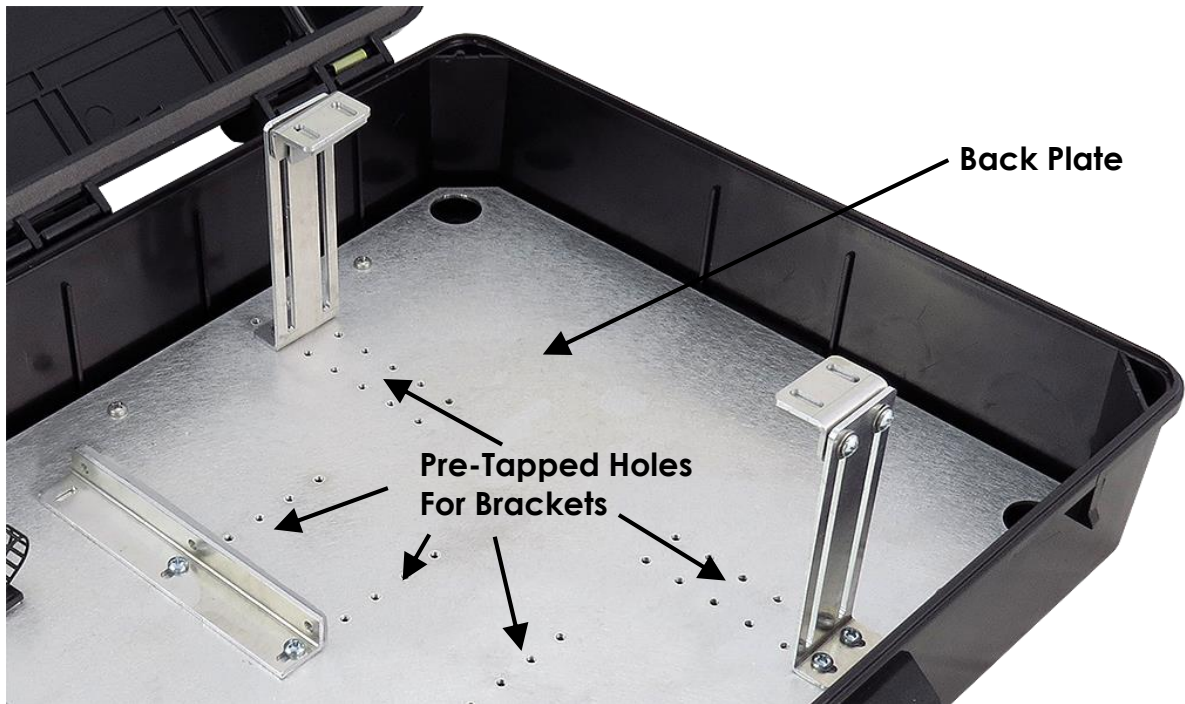
1. To determine the location of the (3) equipment mounting brackets, position the device to be installed into the NP17AV enclosure as shown. Be sure to orientate it so that any connections or ports are easily accessible.



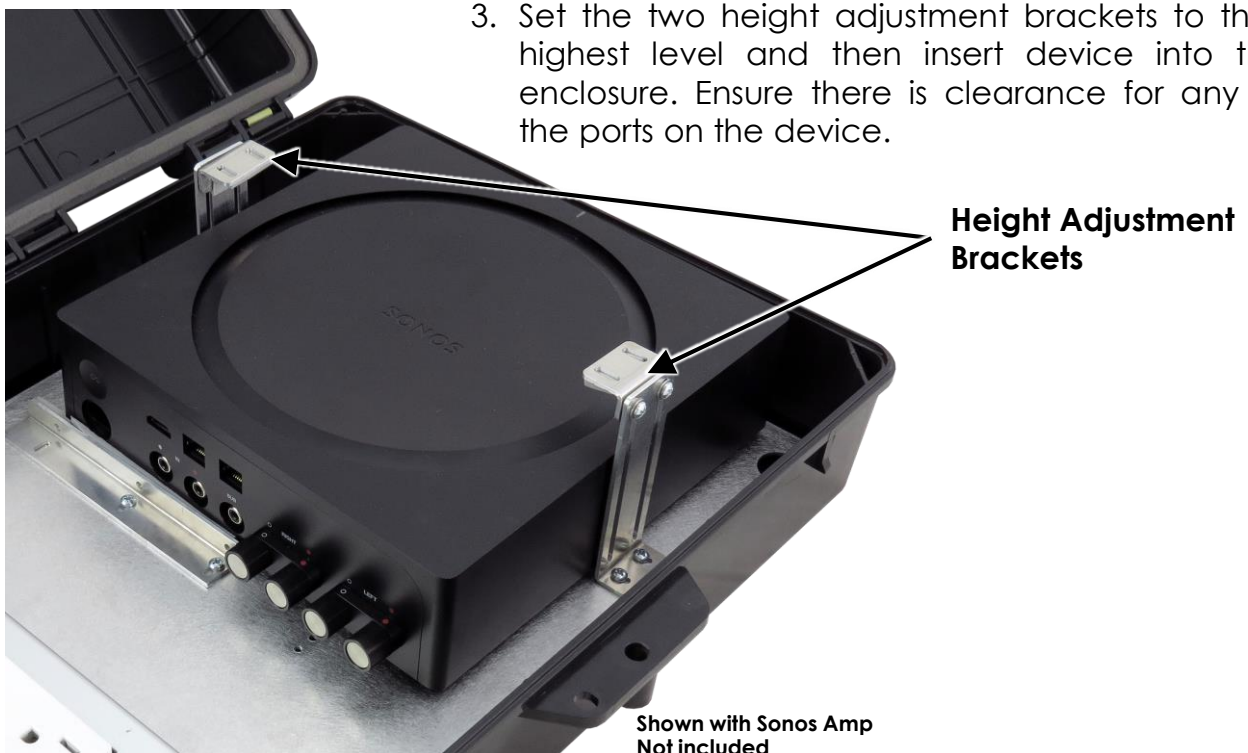
Equipment Mounting Brackets

Shown with Sonos Amp
Not included

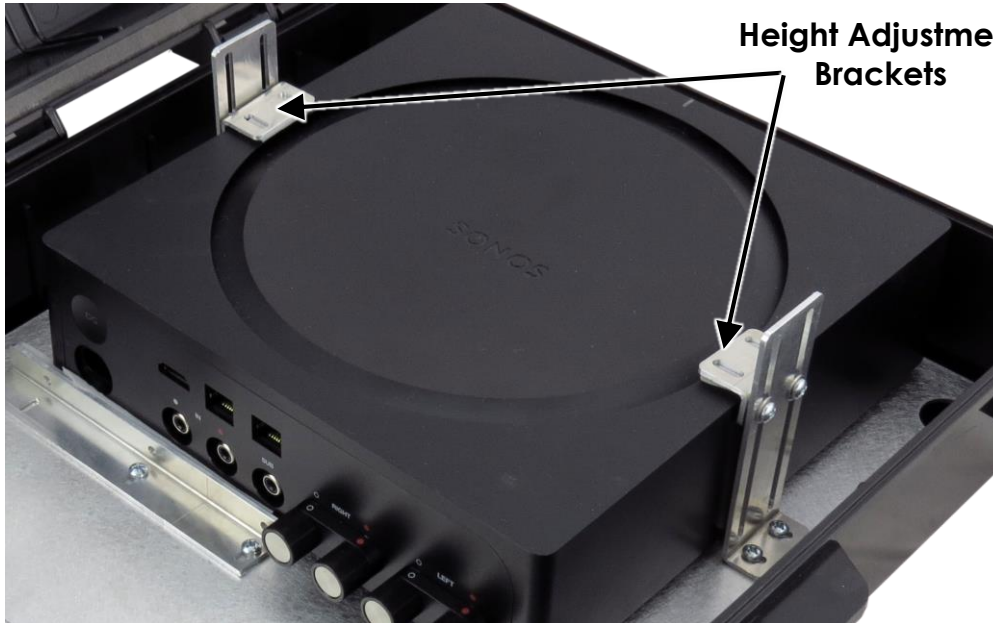
- Once the location of the (3) equipment mounting brackets are determined, secure each to the back plate using the supplied screws. Pre-tapped holes are provided in the back plate for each bracket.



- Set the two height adjustment brackets to their highest level and then insert device into the enclosure. Ensure there is clearance for any of the ports on the device.

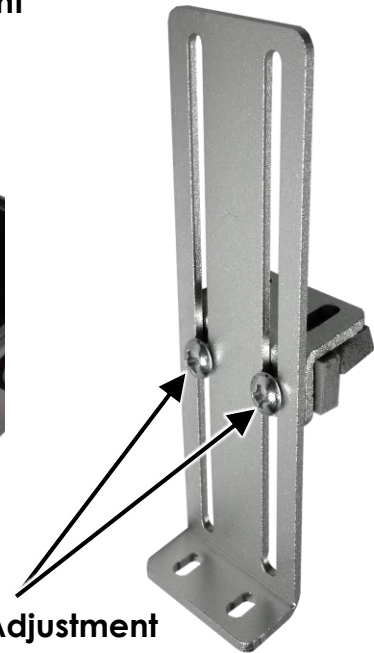


4. Move the two height adjustment brackets into place and secure with the (2) screws on bracket. Ensure height adjustment screws are tight before placing enclosure into vertical position for mounting.



Shown with Sonos Amp
Not included

Height Adjustment
Brackets



Height Adjustment
Screws



Rubber Cable Grommet

4. Carefully punch a hole in the rubber cable grommet provided on the enclosure. Run speaker, Ethernet or any other types of cables to be connected to the device through this grommet.

Mounting the NP17AV Enclosure

The NP17AV enclosure can be either wall mounted using the supplied hardware or pole mounted using the optional **NMK-0001** pole mounting kit available from www.ALTELIX.com.

1. Using a 1/4" drill bit, drill two holes into the rear of the enclosure at the locations shown.

2. Using the included drilling template, place in the desired mounting location and drill wall as required.

3. Included with the enclosure are (4) Rubber Bonded Washers and (4) Screws with Wall Anchors.



4. Place Rubber Bonded Washers onto the Screws as shown.



5. (4) holes in each corner of the metal back plate provide access to the mounting holes in the enclosure. When mounting, ensure the rubber bonded washers completely cover the enclosure mounting holes to provide a water-tight seal.

Drill Locations

