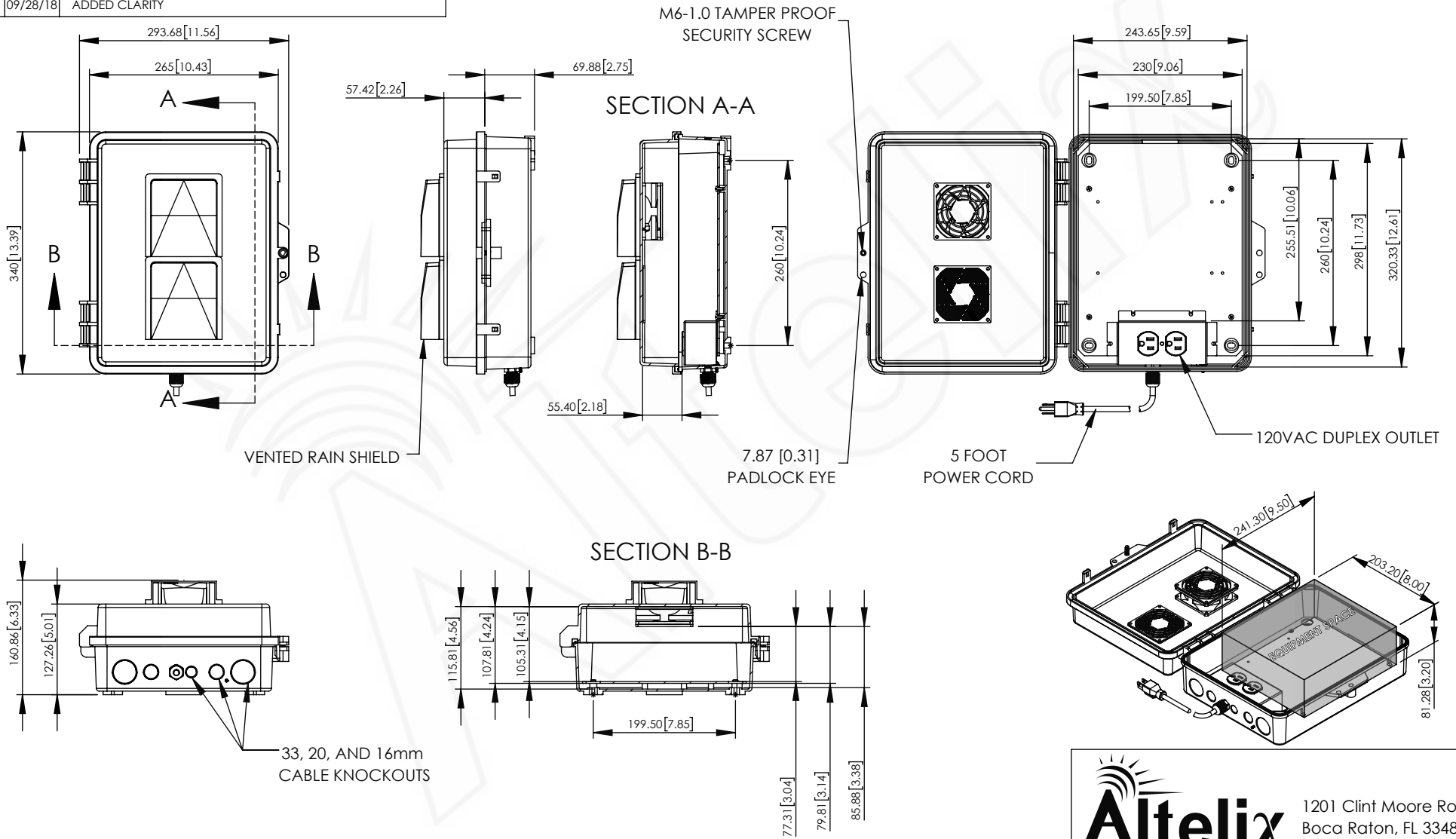


| REV | DATE     | DESCRIPTION        |
|-----|----------|--------------------|
| A   | 01/09/18 | INITIAL RELEASE    |
| B   | 08/10/18 | UPDATED FAN SHROUD |
| C   | 09/28/18 | ADDED CLARITY      |

THE INFORMATION CONTAINED IN THIS DRAWING IS THE SOLE PROPERTY OF ALTELIX LLC. ANY REPRODUCTION IN PART OR WHOLE WITHOUT THE WRITTEN PERMISSION OF ALTELIX LLC IS PROHIBITED. ALL SPECIFICATIONS SUBJECT TO CHANGE WITHOUT NOTICE. (C) 2017 ALTELIX LLC.



| NO. | DESCRIPTION    | MATERIAL | FINISH | QTY. |
|-----|----------------|----------|--------|------|
| 8   | -              | -        | -      | -    |
| 7   | -              | -        | -      | -    |
| 6   | -              | -        | -      | -    |
| 5   | -              | -        | -      | -    |
| 4   | -              | -        | -      | -    |
| 3   | -              | -        | -      | -    |
| 2   | MOUNTING PLATE | ALUMINUM | -      | 1    |
| 1   | NEMA ENCLOSURE | PC+ABS   | -      | 1    |

UNLESS OTHERWISE SPECIFIED:  
DIMENSIONS ARE IN MILLIMETERS.  
DIMENSIONS IN [ ] ARE IN INCHES AND  
ARE FOR CUSTOMER REFERENCE ONLY.

TOLERANCES FOR MILLIMETERS:  
0.5-8mm ± 0.20mm  
8-30mm ± 0.40mm  
30-120mm ± 0.50mm

| TASK     | NAME       | DATE     |
|----------|------------|----------|
| DRAWN BY | N. COLUCCI | 01/09/18 |
| CHECKED  | -          | -        |
| APPROVED | -          | -        |

**Altelix**  
www.altelix.com

1201 Clint Moore Road  
Boca Raton, FL 33487  
TEL: 561-660-WIFI

| PART DESCRIPTION                                       |                   |
|--|-------------------|
| 14 x 11 x 5 VENTED NEMA<br>120VAC, FAN, AND POWER CORD |                   |
| PART NUMBER  | NP141105VFA1C     |
| DRAWING NUMBER   | DRW-NP141105VFA1C |
| SCALE: 1:8   | REV: C            |
| SHEET 1 OF 1   |                   |