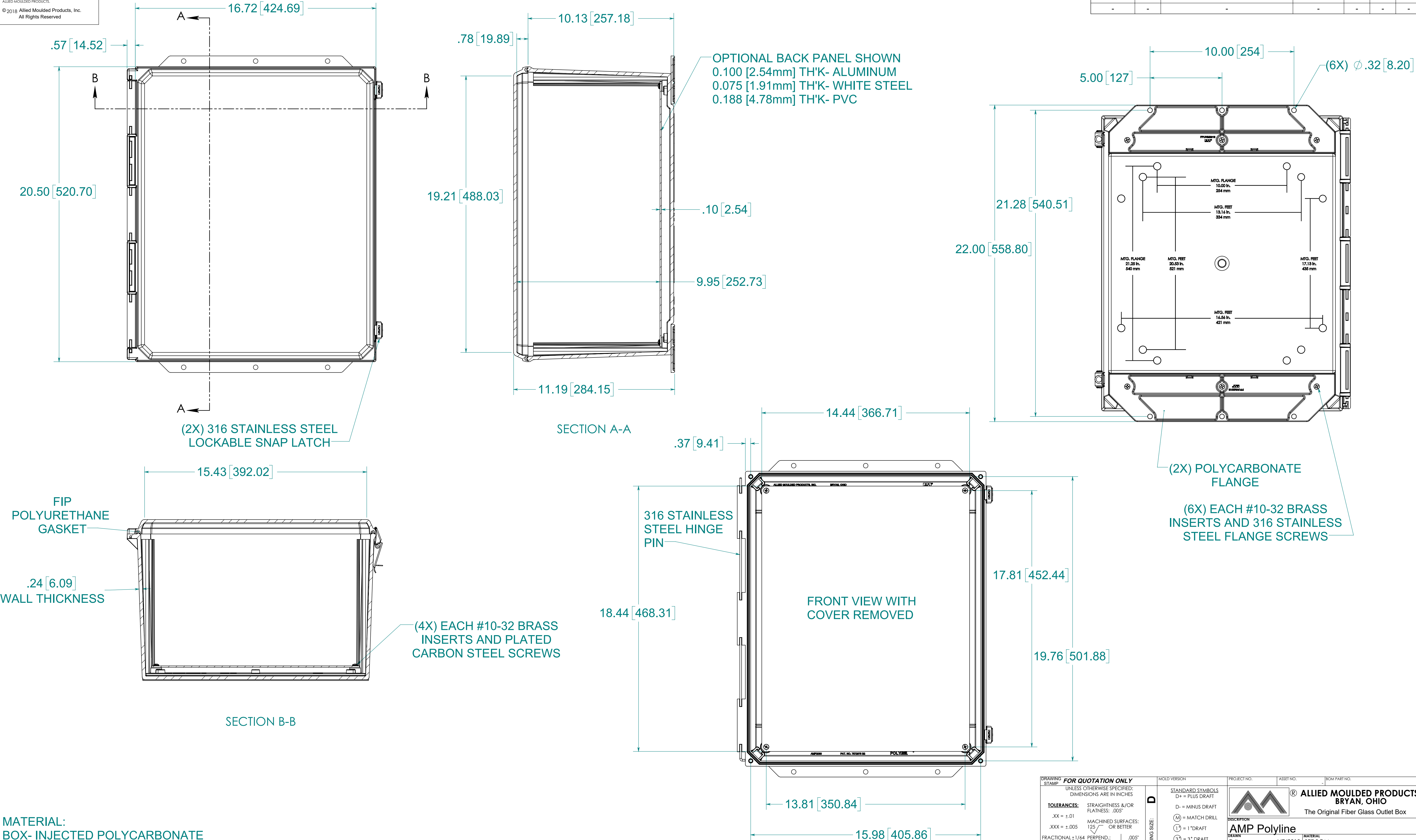



CONFIDENTIAL
THIS MATERIAL IS OWNED BY THE ALLIED MOULDED PRODUCTS COMPANY. IT IS DISCLOSED IN CONFIDENCE AND IS NOT TO BE REPRODUCED OR DISTRIBUTED WITHOUT PRIOR WRITTEN PERMISSION FROM ALLIED MOULDED PRODUCTS.
© 2018 Allied Moulded Products, Inc.
All Rights Reserved



Date	Rev	Description	ECN No.	DR	CK	REL
08/02/2019		INITIAL RELEASE	ECN-314	DJL	SRH	GEL
-	-	-	-	-	-	-
-	-	-	-	-	-	-

DRAWING STAMP	FOR QUOTATION ONLY UNLESS OTHERWISE SPECIFIED: DIMENSIONS ARE IN INCHES	MOLD VERSION	PROJECT NO.		ASSET NO.		BOM PART NO.	
TOLERANCES: .XX = ±.01 .XXX = ±.005 FRACTIONAL ±1/64 ANGULAR ±0°30'	STRAIGHTNESS &/OR FLATNESS: .005" MACHINED SURFACES: 125/ OR BETTER PERPEND.: ⊥ .005" CONCEN.: Ⓢ .005"	STANDARD SYMBOLS D+ = PLUS DRAFT D- = MINUS DRAFT M = MATCH DRILL ① = 1° DRAFT ③ = 3° DRAFT ③ = STEEL SAFE	 ALLIED MOULDED PRODUCTS BRYAN, OHIO The Original Fiber Glass Outlet Box		DESCRIPTION AMP Polyline		MATERIAL SEE BOM FINISH / HEAT TREAT	
THIRD ANGLE PROJECTION	SHEET 1 OF 1 DO NOT SCALE	CRIB NO.: -	DRAWN DJL 6/7/2019		TEST CHECK DJL 08/02/2019		PRINT NUMBER AMP2060CCLF	
			2ND CHECK SRH 08/08/2019		RELEASED GEL 08/08/2019		REV	