

## AM Series

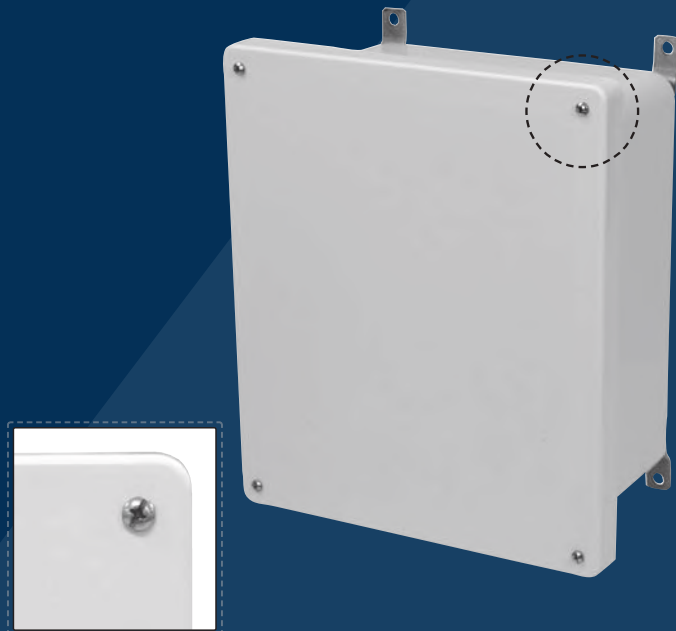
### JIC SIZE JUNCTION BOXES

#### Cover Type

Flat Solid/Opaque

#### Closure Type

Lift-Off Screw Cover



#### Application

Designed to insulate and protect controls and components in both indoor and outdoor applications often found in oil refineries, waste water treatment equipment, chemical plants, and many other applications

- Especially well suited for high temperature or corrosive environments
- Protects from dirt, dust, oil and water
- For use with industrial control equipment

#### Standards

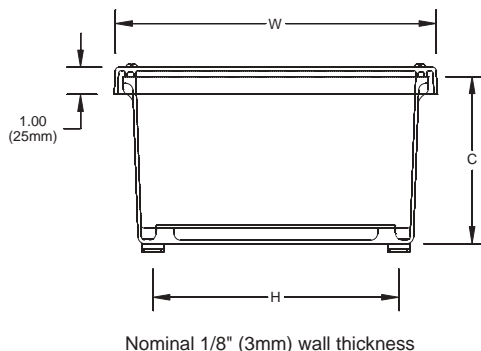
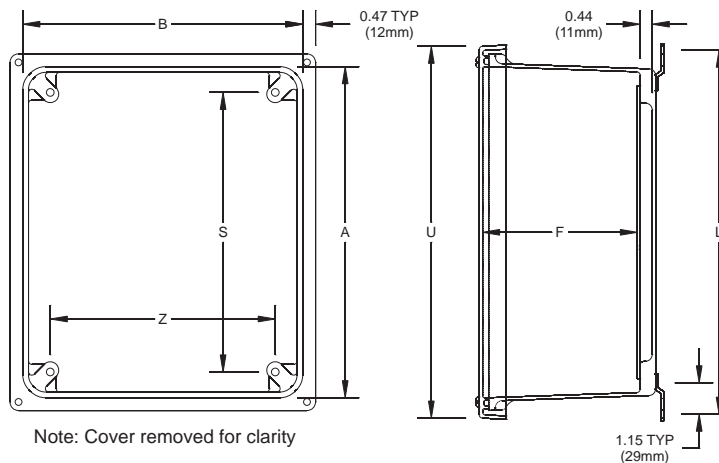
- UL 50 and UL 50E Types 1, 2, 3, 3R, 4, 4X, (6P for sizes 6"x6" up through 14"x12"), 12 and 13
- CSA C22.2 No. 94 Types 1, 2, 3, 3R, 4, 4X, (6P for sizes 6"x6" up through 14"x12"), 12 and 13
- Complies with:
  - NEMA Types 1, 2, 3, 3R, 4, 4X, (6P for sizes 6"x6" up through 14"x12"), 12 and 13
  - IEC 60529 Type IP66 and units rated 6P are IP68 submersible up to 24 hours at a depth of 6 feet (1.8 meters)
  - RoHS directive

#### Construction

- Strong, molded ULTRAGUARD® fiberglass reinforced polyester material construction with matching flat cover
- 316 stainless steel captive cover screws
- Formed-In-Place (FIP) polyurethane gasket system encased in continuous channel
- 316 stainless steel wall mounting feet with 10-32 stainless steel screws included
- #10-32 threaded brass inserts for optional back panel installation
- JIC sizes
- ULTRAGUARD® fiberglass material is easily punched, drilled, or sawed
- UV stabilized for outdoor use

#### Accessories & Modifications

- Optional back panels
- Custom holes and cutouts
- Custom size polycarbonate viewing windows
- Molded-in color matching
- EMI/RFI shielding
- Factory-supplied silk screening



Part No.	Box Size			Usable Depth	Panel Boss Centers			Panel Sizes			Foot Mount Centers		Cover Size	
	A	B	C		F	S	Z	Ht.	Wid.	P/N	H	L	U	W
AM664	6.10	6.10	4.18	3.76	4.25	4.25	4.81	4.81		PL66	5.01	7.32	7.69	7.69
	155mm	155mm	106mm	95mm	108mm	108mm	122mm	122mm		PLA66	127mm	186mm	195mm	195mm
AM864	8.00	6.13	4.14	3.71	6.25	4.25	6.75	4.88		PL86	5.02	9.20	9.59	7.71
	203mm	156mm	105mm	94mm	159mm	108mm	171mm	124mm		PLA86	127mm	234mm	244mm	196mm
AM1084	10.14	8.26	4.13	3.68	8.25	6.25	8.75	6.88		PL108	7.01	11.19	11.73	9.90
	258mm	210mm	105mm	93mm	210mm	159mm	222mm	175mm		PLA108	178mm	284mm	299mm	251mm
AM1086	10.14	8.26	6.13	5.68	8.25	6.25	8.75	6.88		PL108	7.01	11.19	11.73	9.85
	258mm	210mm	156mm	144mm	210mm	159mm	222mm	175mm		PLA108	178mm	284mm	298mm	250mm
AM1206	12.14	10.26	6.13	5.68	10.25	8.25	10.75	8.88		PL120	9.01	13.19	13.73	11.85
	308mm	261mm	156mm	144mm	260mm	210mm	273mm	225mm		PLA120	229mm	335mm	349mm	301mm
AM1224	12.14	12.14	4.13	3.73	10.25	10.25	10.75	10.75		PL122	11.01	13.32	13.72	13.72
	308mm	308mm	105mm	95mm	260mm	260mm	273mm	273mm		PLA122	280mm	338mm	348mm	348mm
AM1226	12.14	12.14	6.13	5.73	10.25	10.25	10.75	10.75		PL122	11.01	13.32	13.72	13.72
	308mm	308mm	156mm	145mm	260mm	260mm	273mm	273mm		PLA122	280mm	338mm	348mm	348mm
AM1426	14.14	12.26	6.13	5.71	12.25	10.25	12.75	10.88		PL142	11.03	15.19	15.73	13.85
	359mm	312mm	156mm	145mm	311mm	260mm	324mm	276mm		PLA142	280mm	386mm	399mm	352mm
AM1648	16.27	14.40	8.13	7.68	14.25	12.25	14.75	12.88		P164	13.01	17.19	17.87	15.99
	413mm	366mm	207mm	195mm	362mm	311mm	375mm	327mm		PA164	330mm	437mm	454mm	406mm
AM1868	18.40	16.40	8.13	7.69	16.25	14.25	16.88	14.88		P186	14.97	19.28	20.00	18.00
	467mm	417mm	207mm	195mm	413mm	362mm	429mm	378mm		PA186	380mm	490mm	508mm	457mm
AM2068	20.00	16.00	8.13	7.68	17.81	13.81	18.44	14.44		P206	14.54	20.84	21.59	17.59
	508mm	406mm	207mm	195mm	452mm	351mm	468mm	367mm		PA206	369mm	529mm	548mm	447mm

All dimensions are in inches unless otherwise noted

Data subject to change without notice

Sizes 6" x 6" up through 14" x 12" are rated 6P (IP68)

Enclosure base part numbers come standard with 4 separately bagged feet (ex. AM664)

Additional back panels found on page 128

